

37 Stanford Street Kurri Kurri, NSW

3

1

1

Centrally located Circa 1920 home ready for a lucky new owner

Price:

Contact Agent



**Renee Bean-Wyper**

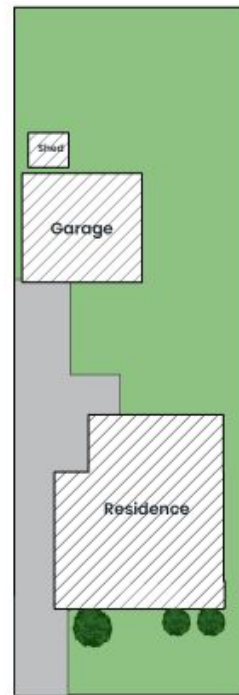
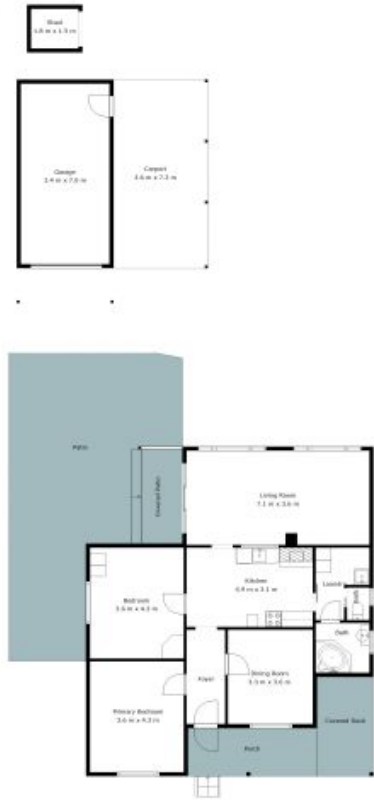
0403 325 076



**Jorja Pauling**

0435 930 665

37 Stanford Street  
Kurri Kurri



Site Map



The site plan and floor plan are not to scale; measurements are indicative and in metres. Bushes and trees are placed for illustration purposes. Plans should not be relied on, interested parties should make and rely on their own enquiries. All other information provided has been collected from reliable sources but cannot be guaranteed for accuracy.