



65 Gueudecourt Avenue Earlwood, NSW

3 

2 

2 

Enormous Potential In One of Earlwood's Most Prestigious Streets

Perfectly positioned in one of Earlwood's most sought-after and prestigious streets, this expansive property with a secondary dwelling offers endless potential for homeowners and investors alike. With its versatile layout and solid foundations, this unique offering provides space, privacy, and the perfect opportunity to create your dream home while enjoying immediate comfort and functionality.

Price: \$2,660,000



George Karafotias

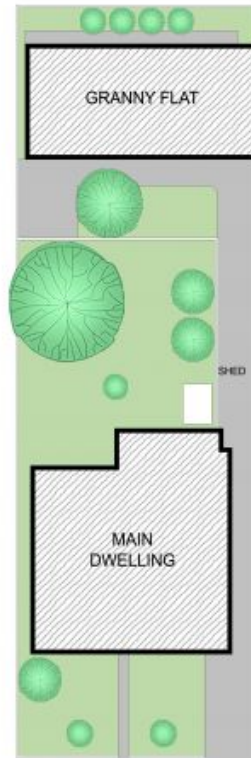
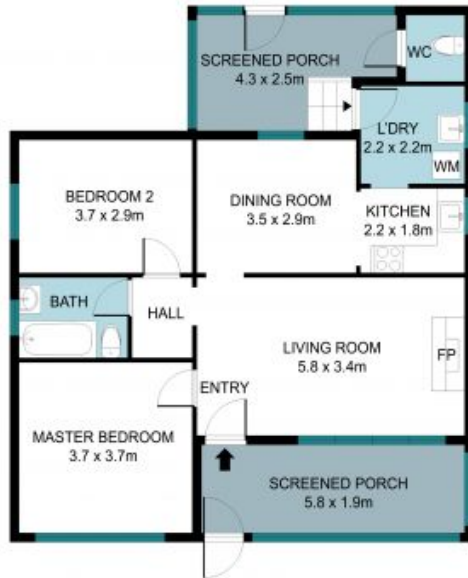
0405 436 336



Michael Alidenes

02 9558 0555

65 Gueudecourt Avenue
Earlwood



SITE PLAN

The site plan and floor plan are not to scale; measurements are indicative and in metres. Bushes and trees are placed for illustration purposes. Plans should not be relied on. Interested parties should make and rely on their own enquiries. All other information provided has been collected from reliable sources but cannot be guaranteed for accuracy.