

7 Jacaranda Place Beecroft, NSW

3 1 2 3

Three bedroom plus study, east side family home on 1,341sqm in Beecroft Primary Catchment

Taking full advantage of its whisper-quiet seclusion amongst sweeping Byles Creek Reserve, this evocative hideaway home offers the tranquility of 1,341sqm grounds enveloped in verdant natural bushland and surreal native wildlife. Both a harmonious escape and versatile living environment, it's the ultimate family retreat in one of the area's most desirable pockets, delivering peaceful privacy without compromise to convenience - under 1km from Beecroft station, with Beecroft Primary, popular eateries and village delights nearby.

Price: Sold by Kevin Dearlove
Council Rates: \$608.30 p/q
Water Rates: \$172.79 p/q



Kevin Dearlove
 0403 338 302

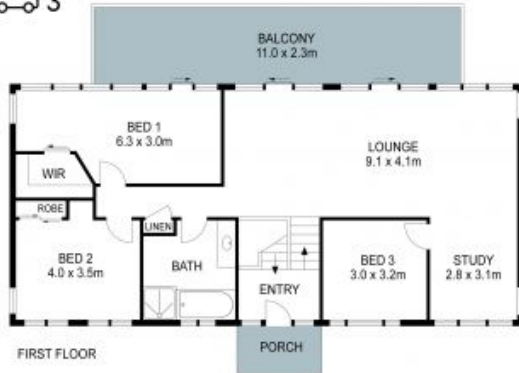


Jeff Jianfu Luo
 0425 286 668

7 Jacaranda Place, Beecroft

STONE

3 2 3
1341m²



THIS IS AN ARTIST'S IMPRESSION - ALL DIMENSIONS, LAYOUTS AND TREES ARE APPROXIMATE
ALL INTERESTED PARTIES SHOULD MAKE AND RELY ON THEIR OWN ENQUIRIES

