



3 Queens Road New Lambton, NSW



### Potential to add value in lifestyle location

Positioned in one of New Lambton's most sought after streets, this spacious two bedroom residence could quite easily convert to a three bedroom home within the existing floorplan. Positioned on a near level 499m2 with northerly aspect this property offers an ideal opportunity to move in add value and enjoy the New Lambton lifestyle for years to come.

Price:

Sold

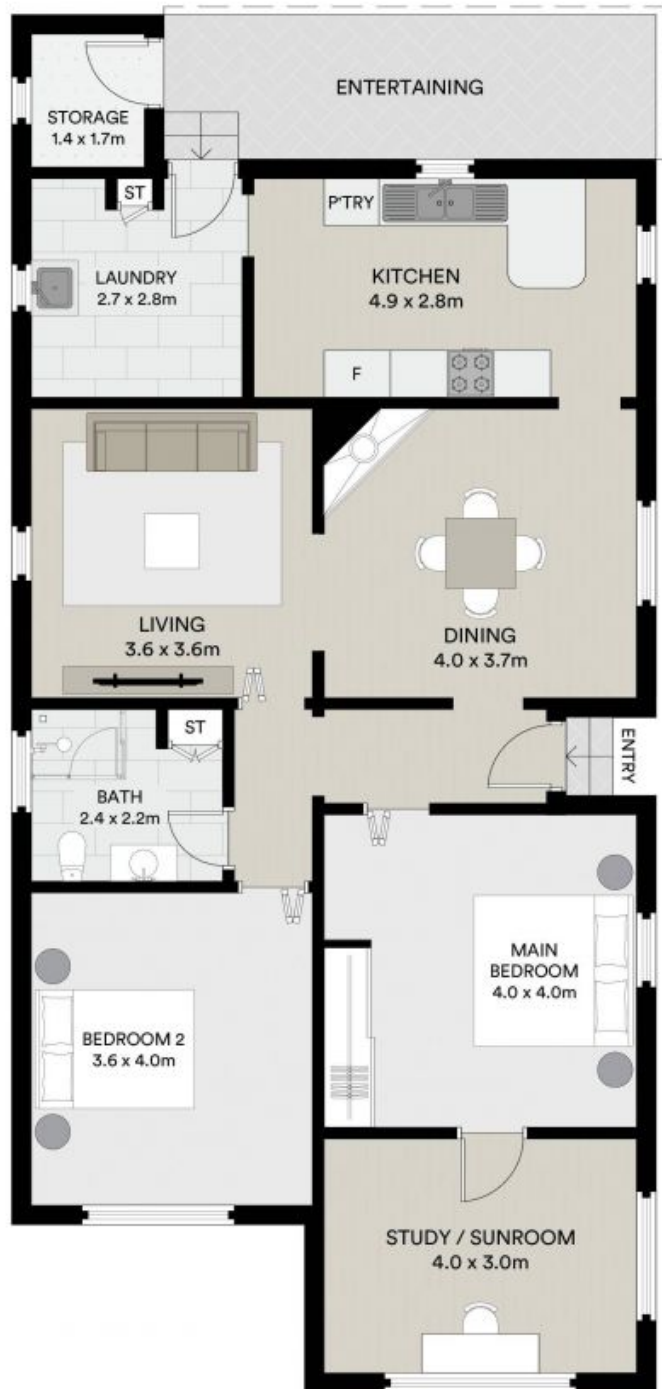
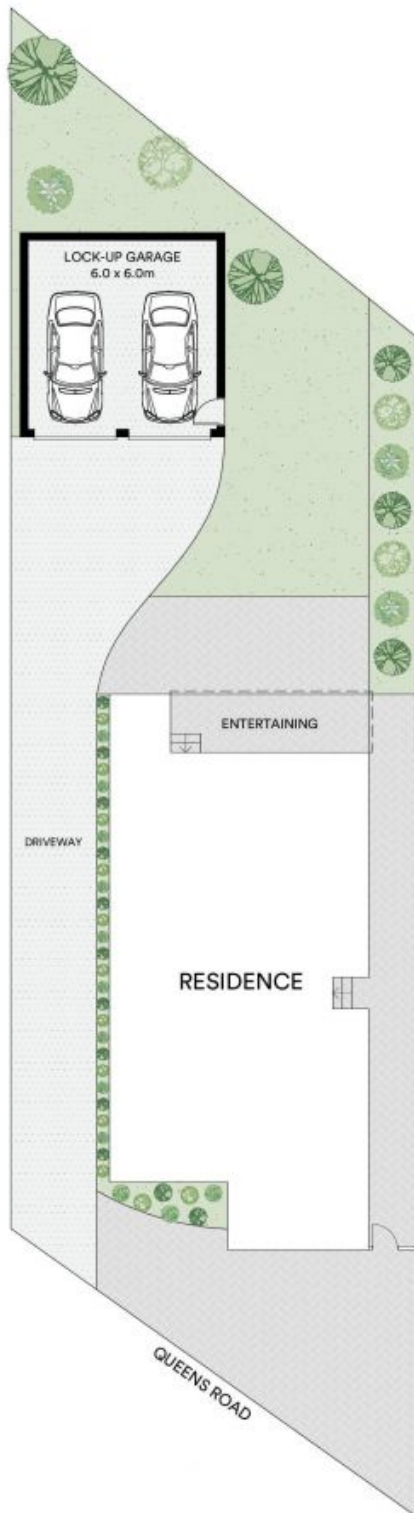


**Sienna Mason**

0407 809 981

**Phil Campbell**

0412 496 059



All information contained in this document is from sources we believe to be accurate, however we cannot guarantee its accuracy. Interested persons should make and rely on their own enquiries in relation to measurements, dimensions, layout, furniture and descriptions.

EXTERNAL AREA : 12 M<sup>2</sup>  
LAND AREA : 499 M<sup>2</sup>