



65 Fawcett Street Mayfield, NSW

4

1

1

### Subtle Charm Within

Discover this charming double-brick home set in one of Mayfield's most desirable streets. Located on a 301 sqm block, it features four spacious bedrooms and off-street parking. The property is extremely well-maintained, with the roof only 2 years old and the entire house regularly painted. The durable double-brick construction is complemented by ornate features throughout, while abundant natural light and an inviting interior are perfect for relaxation and entertaining.

Price:

Sold

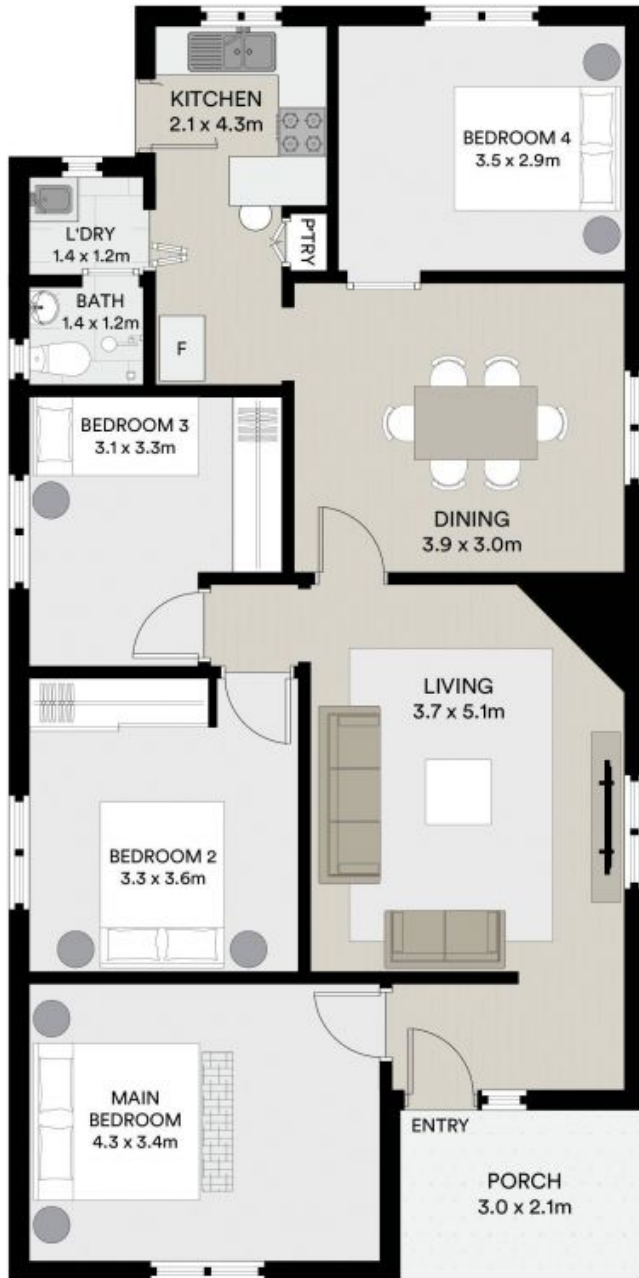


**Sean Redpath**

0411 474 316

**Chloe Flavel**

0429 659 679



All information contained in this document is from sources we believe to be accurate, however we cannot guarantee its accuracy. Interested persons should make and rely on their own enquiries in relation to measurements, dimensions, layout, furniture and descriptions.

INTERNAL AREA : 101 M<sup>2</sup>  
 LAND AREA : 301 M<sup>2</sup>