

91 Russell Road New Lambton, NSW



Golden Investment Opportunity - 8 x 2 Bedroom Units

Sitting in the heart of lovely New Lambton, this unique property is a stone's throw from great cafs, restaurants, butcher shops, bakeries, an IGA supermarket, and much more. For sale for the first time since this block was built, it's truly one of the finest pieces of New Lambton real estate to hit the market in years. Set on an expansive 963sqm block with approximately 20-metre frontage and dual access, this property is an exceptional investment with scope to increase that return on investment.

Price:

Sold \$3,200,000



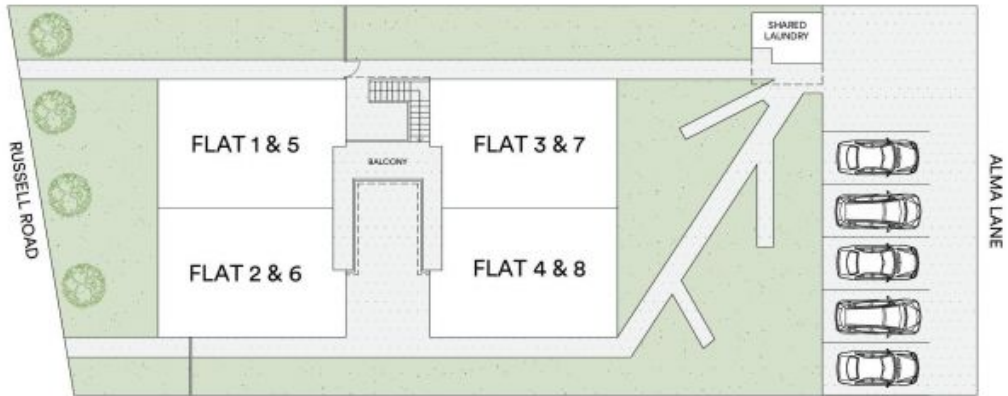
Todd Mason

0427 480 780



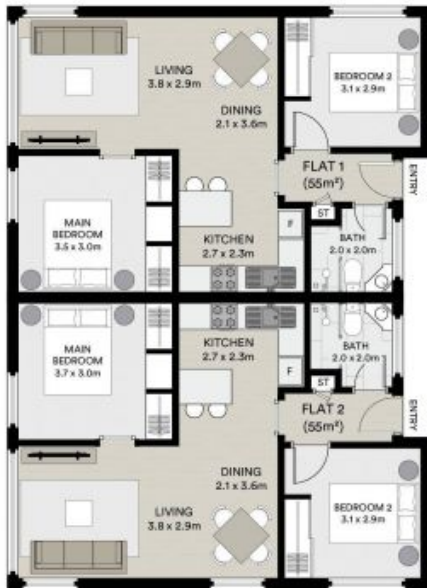
Sienna Mason

0407 809 981



FIRST FLOOR

FIRST FLOOR



GROUND FLOOR



GROUND FLOOR



All information contained in this document is from sources we believe to be accurate, however we cannot guarantee its accuracy. Interested persons should make and rely on their own enquiries in relation to measurements, dimensions, layout, furniture and descriptions.

INTERNAL AREA : 440 M²
 EXTERNAL AREA : 720 M²
 LAND AREA : 963 M²