

27 Dunkley Avenue New Lambton, NSW 4 2 1

One of a Kind

Showcasing a fusion of traditional and contemporary design, this architecturally inspired residence with bespoke finishes throughout is guaranteed to impress upon inspection. Occupying an elevated northerly aspect that captures stunning city views and coastal breezes just moments to local village shops at Orchardtown Road, this residence is a true standalone property within New Lambton.

Price: Sold \$1,900,000



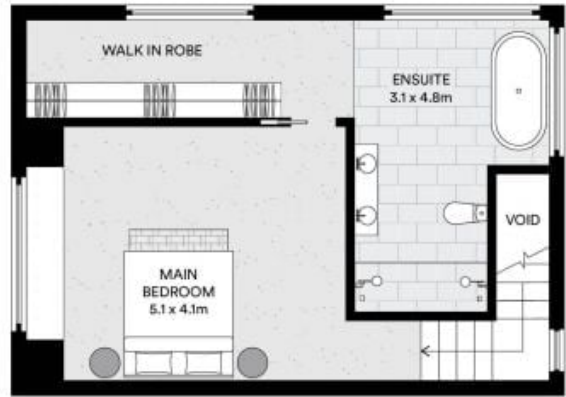
Todd Mason

0427 480 780



Sienna Mason

0407 809 981



All information contained in this document is from sources we believe to be accurate, however we cannot guarantee its accuracy. Interested persons should make and rely on their own enquiries in relation to measurements, dimensions, layout, furniture and descriptions.

INTERNAL AREA: 208M<sup>2</sup>  
 EXTERNAL AREA: 188M<sup>2</sup>  
 LAND AREA: 367M<sup>2</sup>