

G07/28 Shepherd Street Liverpool, NSW



### Peaceful One + Study Courtyard Style Apartment

Experience oversized living in a quiet ground-floor apartment within Liverpool's prestigious Paper Mill Precinct.

**Price:** SOLD  
**Council Rates:** \$327.00 p/q  
**Water Rates:** \$169.03 p/q  
**Strata Rates:** \$1,355.10 p/q



**Ivan Gunawan**

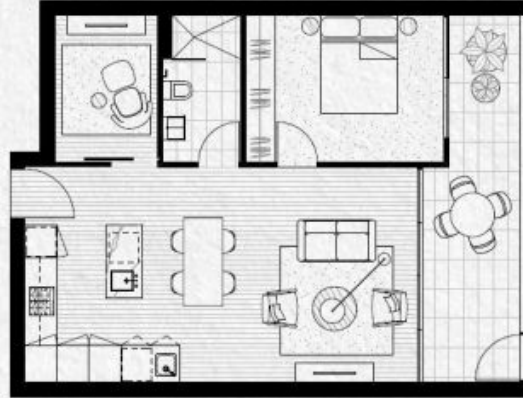
0421 032 760



THE × BINDERY  
THE PAPER MILL ON REDDERS RIVER



1 BEDROOM + MEDIA ROOM



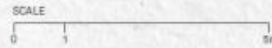
INTERNAL	60m <sup>2</sup>
EXTERNAL	14m <sup>2</sup>
PARKING	14m <sup>2</sup>
TOTAL	88m <sup>2</sup>



ASPECT Studios



NOTE: 1. Furniture shown not included. 2. Refer to 2D/3D render of finished for list of materials, finishes and colours.



LIVEATTHEPAPERMILL.COM.AU