



4 Facey Lane Spring Farm, NSW

5 2 2

Spacious family entertainer in a prime Spring Farm location

Positioned on a generous 548sqm block in one of Spring Farm's most convenient pockets, this stunning four-bedroom home is designed for comfortable family living and effortless entertaining. With multiple living zones, premium inclusions, and an unbeatable location close to shops, schools, and parks, this is a home that truly has it all.

Price: \$1,142,000



Anthony Grima

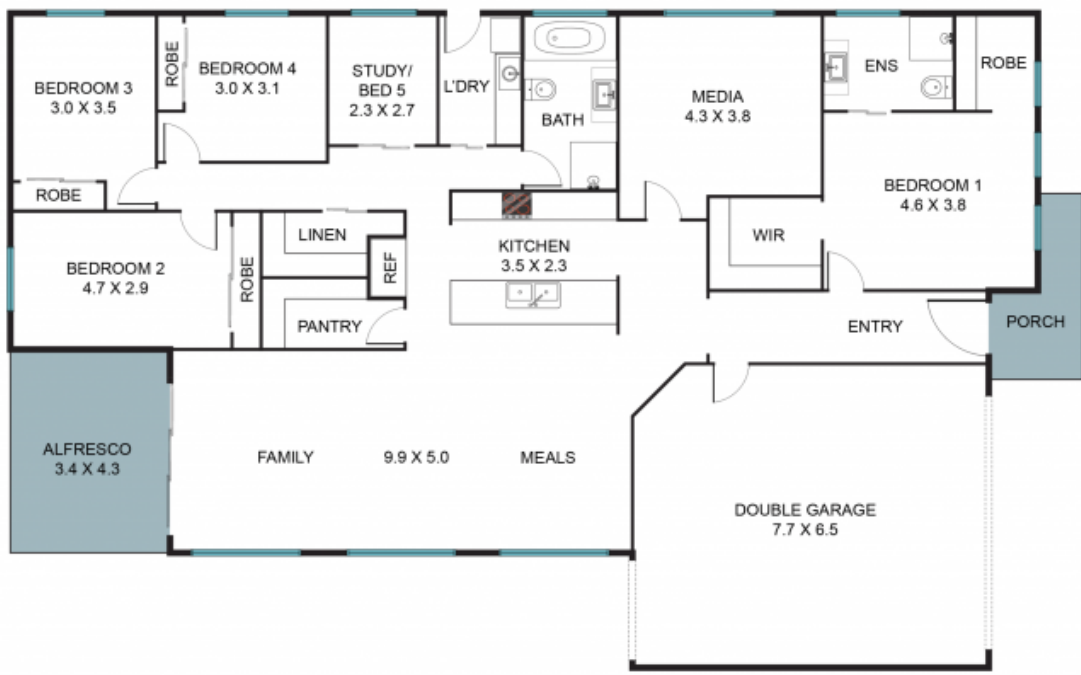
0421 228 414



Rebecca Philp

0403 613 271

STONE



4 Facey La, Spring Farm NSW 2570



The floor plan is not to scale, measurements are in metres. Exterior elements are not in position.
Plans should not be relied on. Interested parties should make and rely on their own enquiries.
All other information provided has been collected from reliable sources but cannot be guaranteed for accuracy.