



14/6 Larkin Street Roseville, NSW



## Expansive Living: Northeast Sunshine and Footsteps to Rail

Embrace the freedom of abundant space and enduring quality in this substantial full brick apartment. Northeast sunshine pours into the open living area and the main bedroom, providing welcoming ambience year-round. Windows on three sides and a generous balcony capture the tranquillity of leafy surrounds.

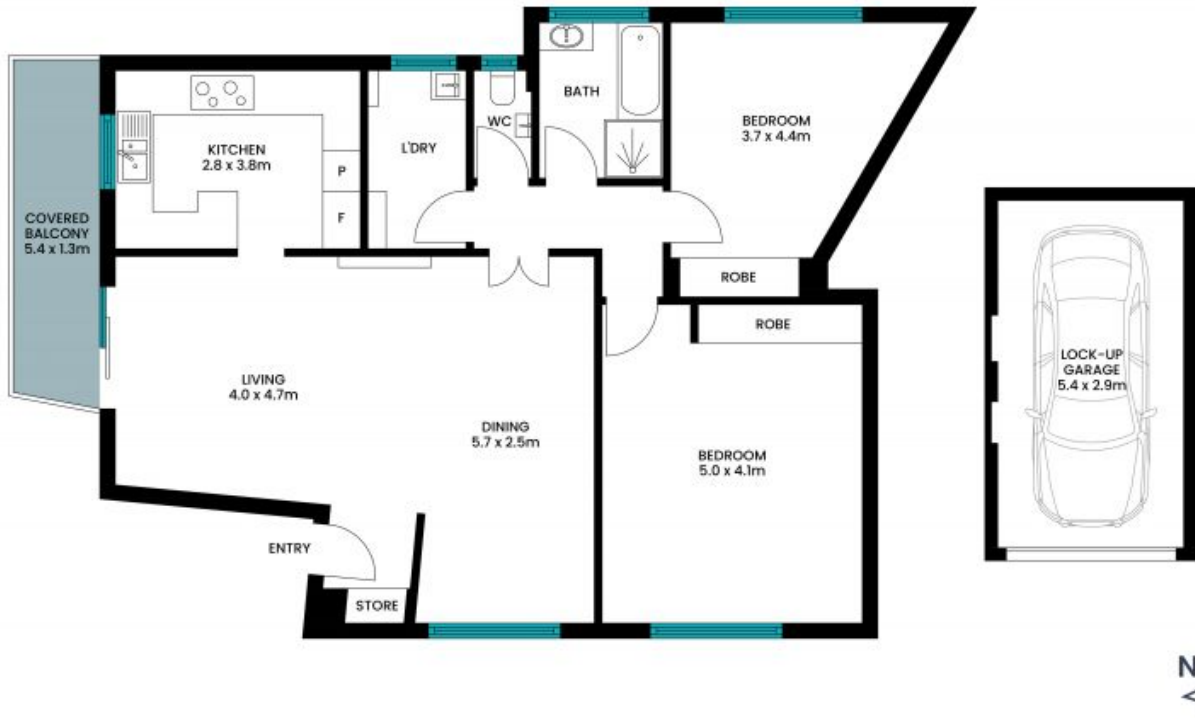
**Price:** Contact Agent  
**Council Rates:** \$399.00 p/q  
**Water Rates:** \$170.00 p/q  
**Strata Rates:** \$1,293.20 p/q



**Andrew Braid**

0404 979 597

14/6 Larkin Street  
Roseville



The site plan and floor plan are not to scale; measurements are indicative and in metres. Bushes and trees are placed for illustration purposes. Plans should not be relied on. Interested parties should make and rely on their own enquiries. All other information provided has been collected from reliable sources but cannot be guaranteed for accuracy.