



11 Ohlfsen Road Minto, NSW

4 1 1

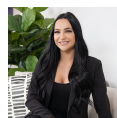
### Perfectly positioned 4-bedroom home

This well presented 4-bedroom home offers an ideal setting for relaxed family living. Positioned in a highly convenient location, the home is just a 5-minute drive to Minto Mall and only moments from Minto Train Station. Enjoy the tranquility of having Passfield Park directly across the street, while public transport is easily accessible with a bus stop just a 3-minute walk away.

**Price:** \$750 per week

**Bond:** \$3,000

**Available Date:** 10/04/2025



**Leasing Department**

0481064443

**Stone Macarthur**