

1011/6 Saunders Close Macquarie Park, NSW 1  1  1 

Sleek and scenic lifestyle apartment in the heart of Macquarie Park

Holding a prized address that boasts front-row enjoyment of Macquarie Park retail, transport and conveniences, this bright and breezy apartment offers rewarding prospects for young professionals and investors alike. Its high-floor position captures breathtaking sky-high scenery atop a prime location - around the corner from Macquarie University, metro services, buses and popular culinary delights.

Price: Guide: \$650,000
Council Rates: \$348.10 p/q
Water Rates: \$169.03 p/q
Strata Rates: \$1,273.22 p/q



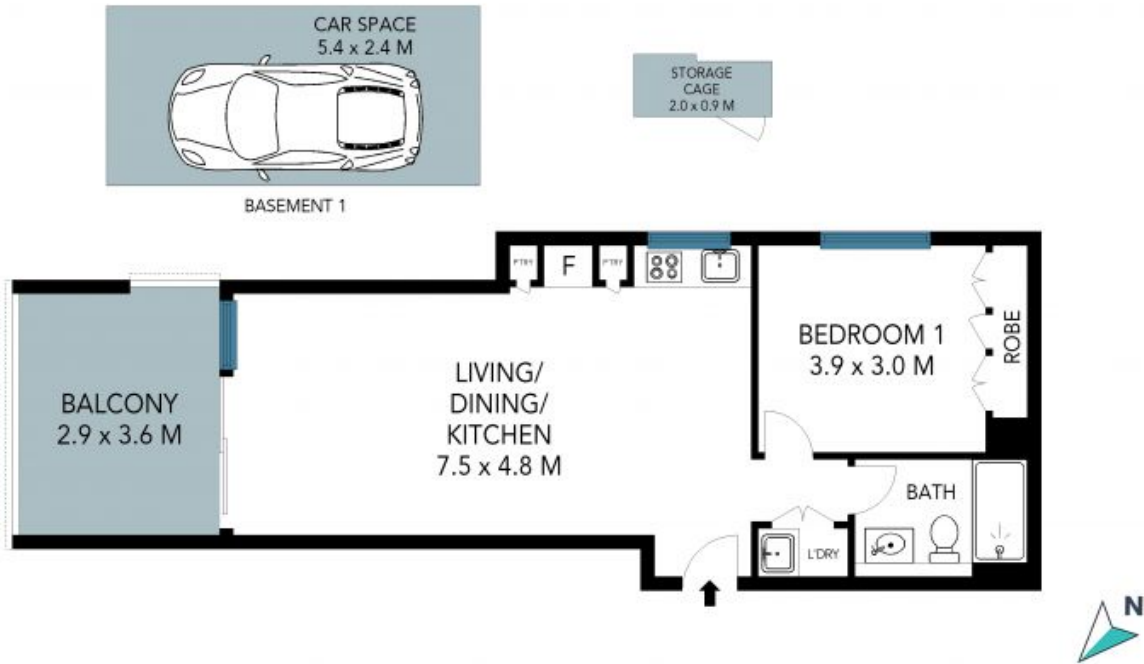
Jeff Jianfu Luo

0425 286 668



Wenjie Luo

0433 971 007



The site plan and floor plan are not to scale; measurements are indicative and in metres. Bushes and trees are placed for illustration purposes. Plans should not be relied on. Interested parties should make and rely on their own enquiries. All other information provided has been collected from reliable sources but cannot be guaranteed for accuracy.