



11/78 Spofforth Street Cremorne, NSW 1 1

UNDER CONTRACT

An entry level opportunity representing value and comfort, a sunny and bright north facing one bedroom apartment set on the first floor and positioned in a sought-after lifestyle location, close to express city buses & ferries, both Spofforth Street and Cremorne Town Centre shops, trendy cafes & dining and the Hayden Orpheum Cinema.

Price: SOLD



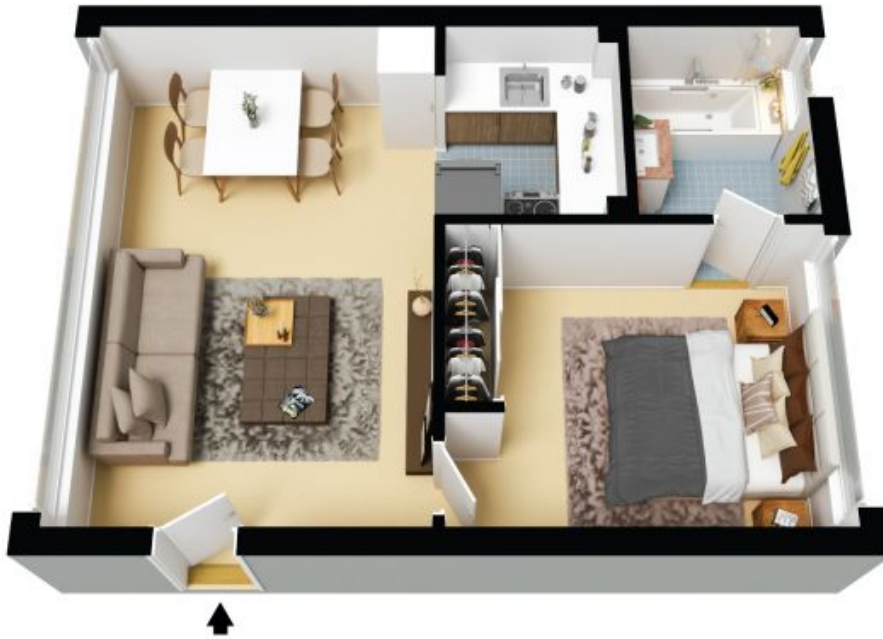
Andrew Thomas

0421 281 234



The floor plan is not to scale; measurements are indicative and in metres. Colour elements are not in position. Plans should not be relied on. Interested parties should make and rely on their own enquiries. All other information provided has been collected from reliable sources but cannot be guaranteed for accuracy.

11/78 Spofforth Street
Cremorne



The floor plan is not to scale, measurements are indicative and in metres. All features included in this 3D plan are for inspiration purposes only. This is not an exact replica of the property or the position of exterior elements. Plans should not be relied on. Interested parties should make and rely on their own enquiries.