

3.206/18 Hannah Street Beecroft, NSW



Oversized two bedroom apartment in unbeatable Beecroft position

Delivering front-row lifestyle indulgence in the heart of Beecroft, this elevated two-bedroom abode offers an experience of absolute comfort and convenience within the luxuriously finished 'Beecroft Place' development. Intuitively designed for low upkeep turn-key living, its central position provides easy access to Beecroft shopping village, buses, station and popular eateries.

Price: Auction
Council Rates: \$370.80 p/q
Water Rates: \$170.90 p/q
Strata Rates: \$1,380.65 p/q



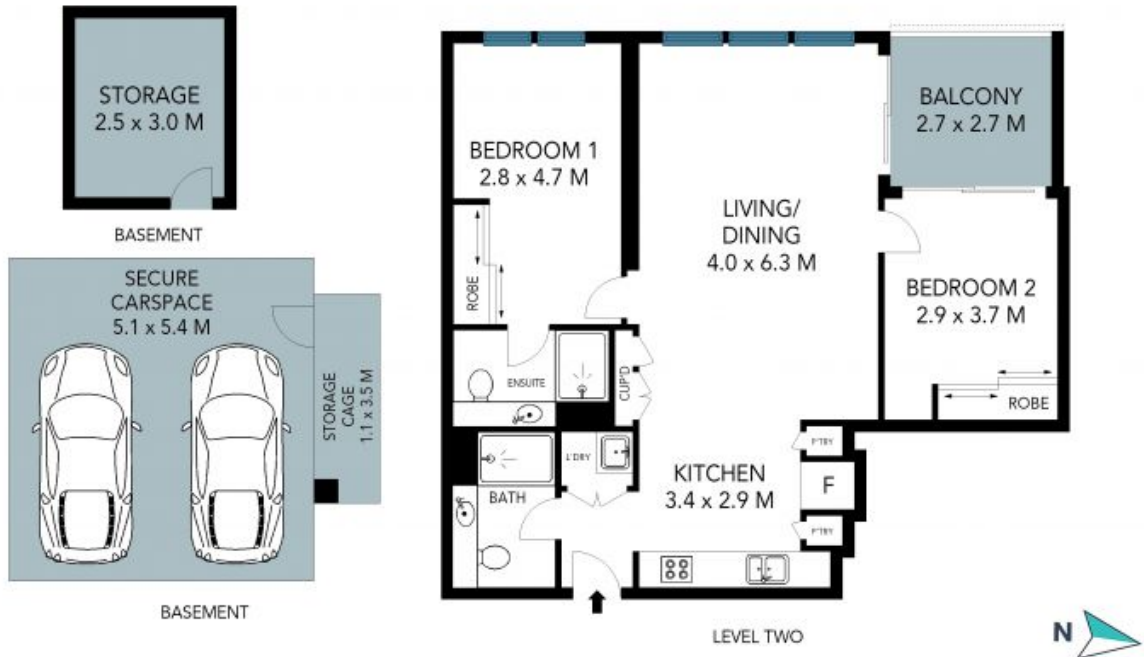
Jeff Jianfu Luo

0425 286 668



Wenjie Luo

0433 971 007



The site plan and floor plan are not to scale; measurements are indicative and in metres. Bushes and trees are placed for illustration purposes. Plans should not be relied on. Interested parties should make and rely on their own enquiries. All other information provided has been collected from reliable sources but cannot be guaranteed for accuracy.