

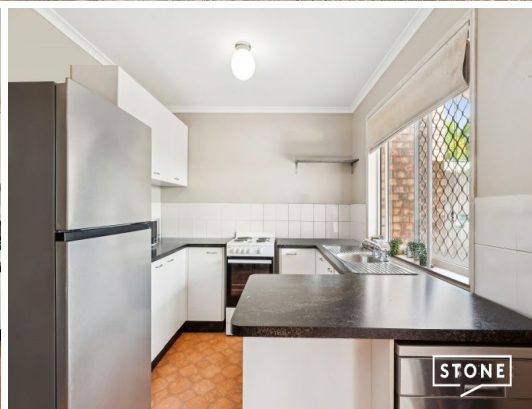
STONE



STONE



STONE



STONE



STONE

6/34 Bourke Street Waterford West, QLD

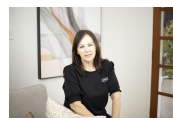


"Prime Location, Great Value!"

Tucked away in a small, well maintained complex, this charming townhouse offers a blend of comfort, space, and a welcoming community. With just twenty units, mostly owner-occupied, you'll enjoy a sense of belonging while still preserving your privacy.

Price:

CONTACT AGENT



Leanne Gunn

0413 817 092



Approx. Floor Area | Internal 105 m² | External (Covered) 25m² | Total 130 m²

Unless otherwise stated, all dimensions are in metres. Stair arrows indicate the upward direction. This plan and information contained within is for illustrative purposes only and not guaranteed to be exact. Interested parties should make their own enquiries.

