



70 Floyd Street Spring Farm, NSW



### Feature-packed family living in the heart of Spring Farm

Welcome to 70 Floyd Street, a thoughtfully designed family home offering high-end finishes, generous living spaces, and a location perfect for modern families. Set in a quiet and friendly neighbourhood, this home combines comfort, practicality, and style with standout features both inside and out.

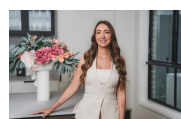
Price:

Contact Agent



**Anthony Grima**

0421 228 414



**Rebecca Philp**

0403 613 271



The floor plan is not to scale, measurements are indicative and in metres. Exterior elements are not in position. Plans should not be relied on, interested parties should make and rely on their own enquiries. All other information provided has been collected from reliable sources but cannot be guaranteed for accuracy.