

18 Newman Street Spring Farm, NSW 4 2 1

Stylish family home with poolside entertaining

Perfectly positioned in a family-friendly pocket of Spring Farm, this beautifully presented home offers comfort, functionality, and lifestyle in equal measure. Thoughtfully designed with modern features throughout and a stunning in-ground pool, it's ideal for growing families or those who love to entertain.

Price: \$1,030,000



Anthony Grima

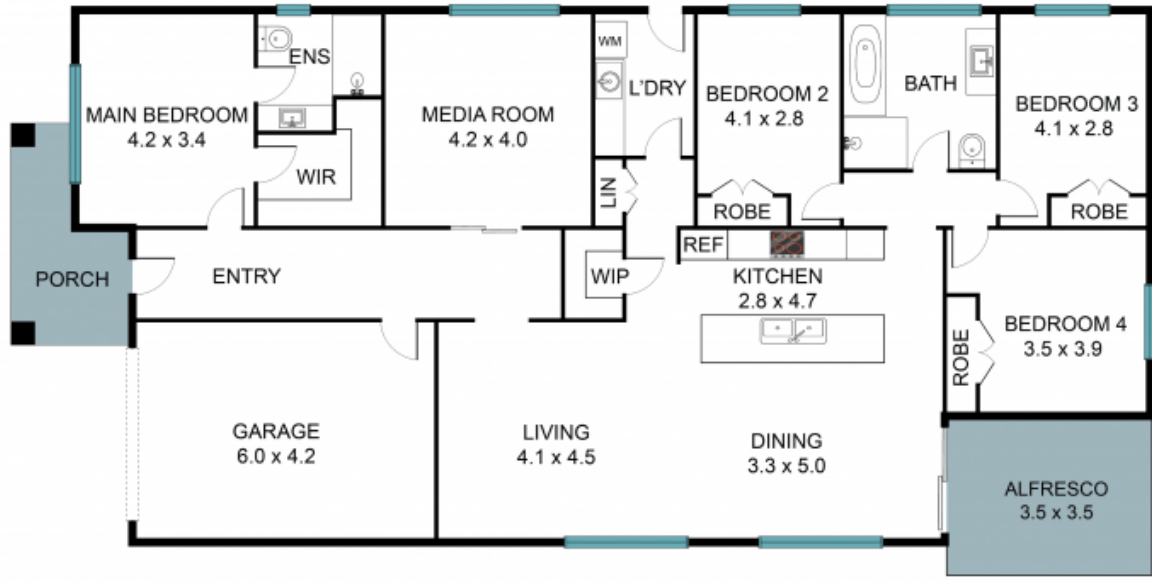
0421 228 414



Rebecca Philp

0403 613 271

STONE



18 Newman Rd, Spring Farm NSW 2570



The floor plan is not to scale, measurements are in metres. Exterior elements are not in position.
Plans should not be relied on. Interested parties should make and rely on their own enquiries.
All other information provided has been collected from reliable sources but cannot be guaranteed for accuracy.