

621/51-54 The Esplanade Ettalong Beach, NSW



Ettalong Beach Resort - Residential Unit

A rare opportunity with residential zoning is this gorgeous sixth floor, one bedroom apartment with mountain views. Located in the Ettalong Beach resort, live it up with access to the hotel pool and spa whilst being within walking distance to the beach, cafes, shops and restaurants. Furnishings may vary.

Price: \$565,000
Council Rates: \$1,169.97/year (approx)
Water Rates: \$1,062.99/year (approx)
Strata Rates: \$1,200.00 p/q



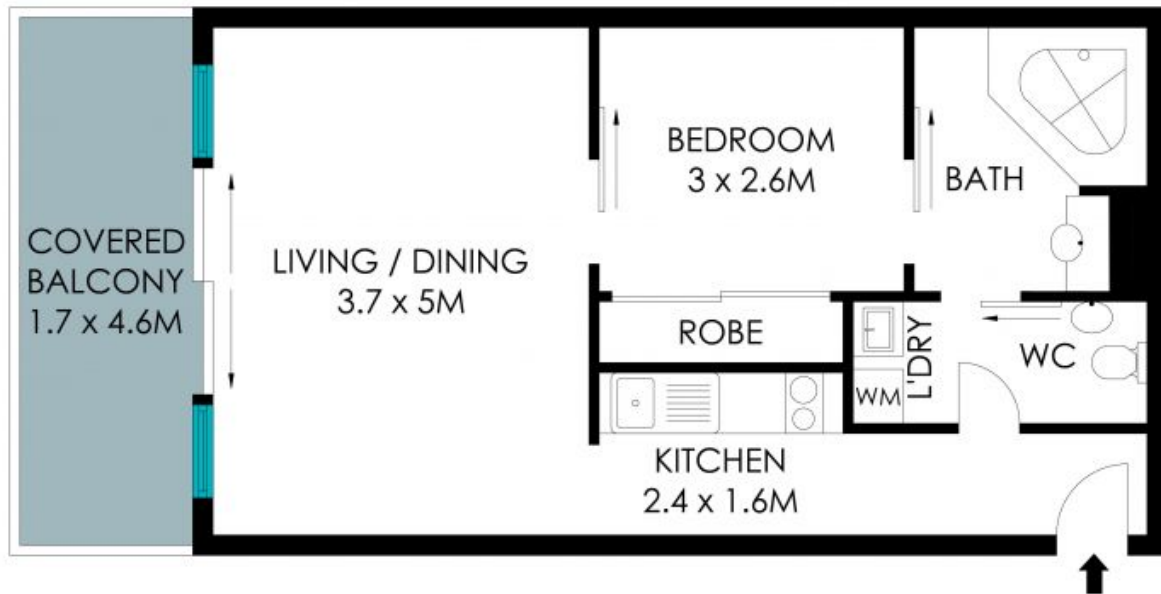
Christel Renton

0417 208 314



Lian O'Grady

0423 688 275



Total Living Area: 55 sqm



The site plan and floor plan are not to scale; measurements are indicative and in metres. Bushes and trees are placed for illustration purposes. Plans should not be relied on. Interested parties should make and rely on their own enquiries. All other information provided has been collected from reliable sources but cannot be guaranteed for accuracy.