



41/47 Stowe Avenue Campbelltown, NSW

2 2 2

Stunning seventh floor apartment with gorgeous views

Welcome to your new home in the sought-after 'Stowe Apartment' complex! Perched on the seventh floor, this rare gem offers beautiful views over the University Green Space corridor and out to the Menangle Hills ? the perfect backdrop for relaxed, modern living.

Price: \$670,000
Council Rates: \$347.50 p/q
Water Rates: \$171.60 p/q
Strata Rates: \$1,395.00 p/q



Michelle Balabka

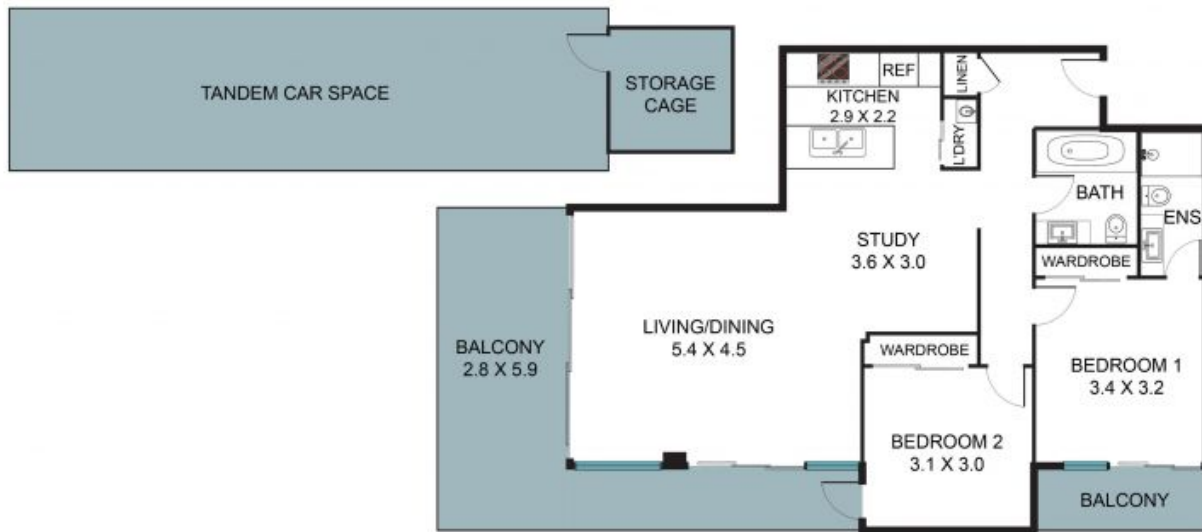
0419 473 253



Russell Wyer

0414 867 707

STONE



41/47 Stowe Ave, Campbelltown NSW 2560



The floor plan is not to scale, measurements are in metres. Exterior elements are not in position.
Plans should not be relied on. Interested parties should make and rely on their own enquiries.
All other information provided has been collected from reliable sources but cannot be guaranteed for accuracy.