

1/62 Ridge Street Ettalong Beach, NSW

3 2 2

### Modern Coastal Villa in Prime Ettalong Location

Positioned at the front of an exclusive complex of just two, this beautifully updated villa offers a rare combination of space, privacy, and lifestyle convenience—only 800m from the golden sands of Ettalong Beach, cafes, shops, and transport.

**Price:** \$1,000,000 - \$1,050,000

**Council Rates:** \$1,423.76/year (approx)

**Water Rates:** \$1,062.99/year (approx)



**Christel Renton**

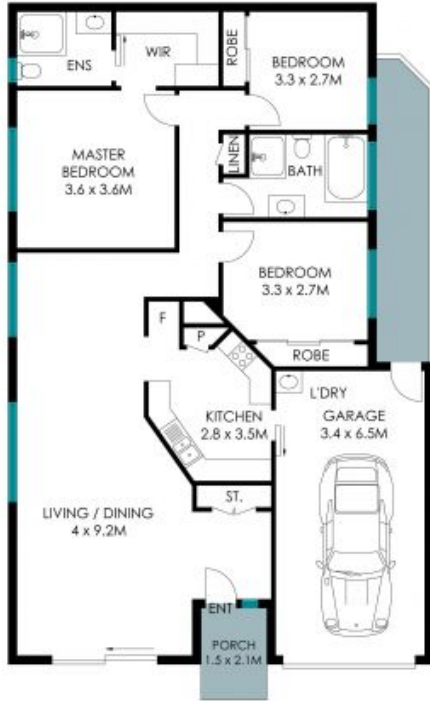
0417 208 314



**Helen Hughes**

0418 220 622

1/ 62 Ridge Street,  
Ettalong Beach



Main Residence



Site Plan



Total Living Area: 135 sqm

The site plan and floor plan are not to scale; measurements are indicative and in metres. Bushes and trees are placed for illustration purposes. Plans should not be relied on. Interested parties should make and rely on their own enquiries. All other information provided has been collected from reliable sources but cannot be guaranteed for accuracy.