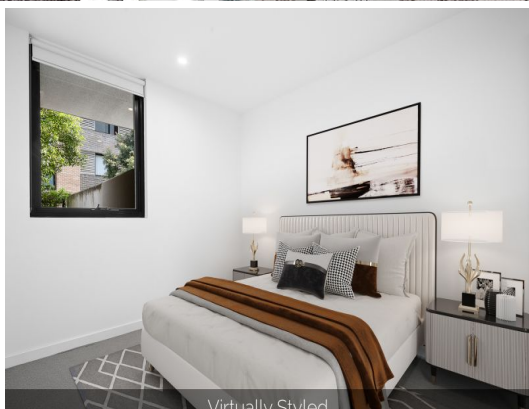


Virtually Styled



Virtually Styled



2.107/18 Hannah Street Beecroft, NSW



'Beecroft Place' garden apartment of luxury and liveability

A seamlessly finished contemporary prospect in 'Beecroft Place', this stylish executive abode encapsulates every quality of lifestyle brilliance. Tucked on the ground floor, it's a haven of privacy, comfort and lock-and-leave ease for busy professionals seeking Beecroft's lively retail and dining scene virtually at their doorstep - with an exclusive address.

Price: \$630 per week

Available Date: 28/05/2025

Stone Beecroft | Castle

02 8866 1500

Hill | Epping



The floor plan is not to scale. Measurements are indicative and in metres.

2.107/18 Hannah Street, Beecroft
stonerealestate.com.au

Produced by DIAKRIT



The interior style and design of this floor plan is designed for inspiration purposes to show the living spaces. It is not an exact replica of the furniture and fittings in the home.

2.107/18 Hannah Street, Beecroft
stonerealestate.com.au

Produced by DIAKRIT