

6 Possum Drive Beveridge, VIC

4 2 2

Modern Family Comfort

Welcome to 6 Possum Drive ? a beautifully presented home only 12 months old offering the perfect blend of style, comfort, and convenience. Nestled in a quiet, family-friendly neighbourhood, this modern residence is ideal for first-home buyers, growing families, or savvy investors seeking quality and value. With spacious interiors, a functional layout, and quality finishes throughout, this home is move-in ready and sure to impress.

Price: \$580,000



Dean Zammit

0405 140 704

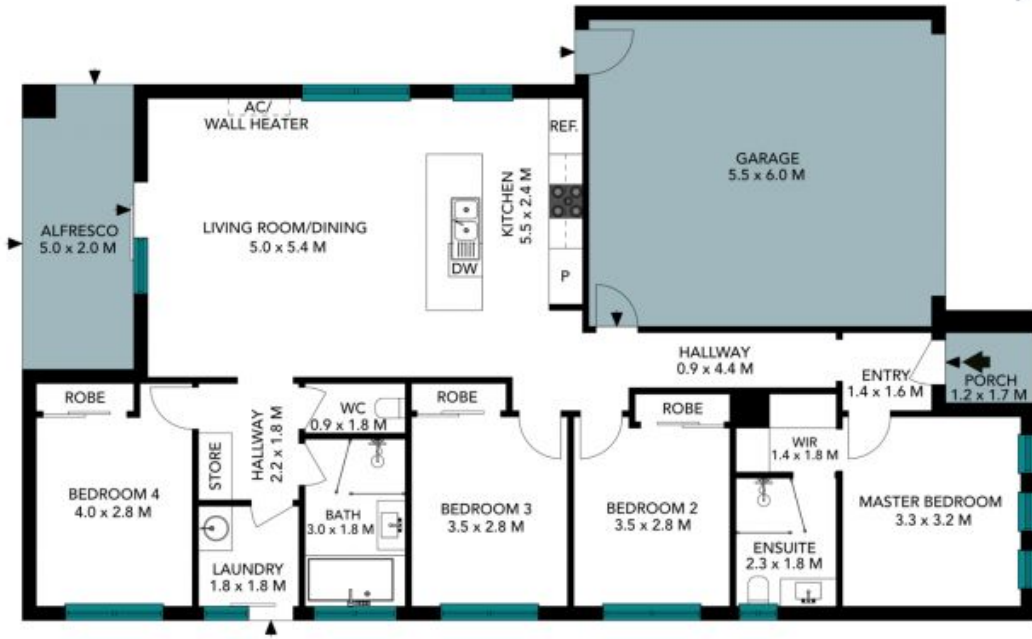


Kristin Parker

0425 210 602

6 Possum Drive
Beveridge

STONE



The floor plan is not to scale, measurements are indicative and in metres. Exterior elements are not in position. Plans should not be relied on. Interested parties should make and rely on their own enquiries. All other information provided has been collected from reliable sources but cannot be guaranteed for accuracy.

6 Possum Drive
Beveridge

STONE



The floor plan is not to scale; measurements are indicative and in metres. All features included in this 3D plan are for inspiration purposes only.
This is not an exact replica of the property or the position of exterior elements. Plans should not be relied on. Interested parties should make and rely on their own enquiries.