

5/5 Chelmsford Avenue Naremburn, NSW



LIFESTYLE LOCATION WITH EASY ACCESS EVERYWHERE

Set in a quiet leafy cul-de-sac, this spacious townhouse offers relaxed indoor/outdoor living and entertaining with lifestyle convenience. Just ten minutes walk to St Leonards rail, shops, CBD and Royal North Shore Hospital, this quiet cul-de-sac is only 1.5km to Crows Nest's renowned cafes, eateries and new metro station and one traffic light to the M1 to the City and North.

Price: Contact Agent
Strata Rates: \$1,473.00 p/q



Jimmy Psaltis

0411 129 221



Natalie Ramsay

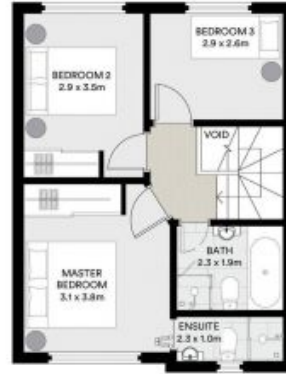
0450 424 583



LOWER GROUND FLOOR



GROUND FLOOR



FIRST FLOOR



All information contained in this document is from sources we believe to be accurate, however we cannot guarantee its accuracy. Interested persons should make and rely on their own enquiries in relation to measurements, dimensions, layout, furniture and descriptions.