

358 Anthony Rolfe Avenue Harrison, ACT

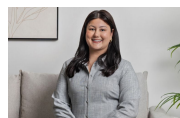
4 2 2

### Sensational & Stylish

Located in the highly sought-after suburb of Harrison, this superb property strikes the perfect balance of warmth, practical family living and high-level inclusions. A brilliant combination of space, light and attention to detail is just some of the attributes that set this home apart from any others in the area and make it an ideal home.

**Price:** \$800 per week

**Available Date:** 03/06/2025



**Courtney Saddi**

6253 8220



**Kerry Robinson**

6253 8220

358 Anthony Rolfe Avenue  
**Harrison**

**STONE**



The site plan and floor plan are not to scale; measurements are indicative and in metres. Bushes and trees are placed for illustration purposes. Plans should not be relied on. Interested parties should make and rely on their own enquiries. All other information provided has been collected from reliable sources but cannot be guaranteed for accuracy.

358 Anthony Rolfe Avenue  
Harrison



Ground Floor



Upper Floor



The floor plan is not to scale; measurements are indicative and in metres. All features included in this 3D plan are for inspiration purposes only. This is not an exact replica of the property or the position of exterior elements. Plans should not be relied on. Interested parties should make and rely on their own enquiries.