

Level 5/2505/10-12 Sickie Avenue Hope Island, QLD



Luxury apartment situated in beautiful Hope Island...

Stylish Waterfront Living Awaits ? 2-Bedroom Haven in Hope Island

Price: \$750 pw

Bond: \$3,000

Available Date: 30/05/2025



Sarah Heke

0427 576 495

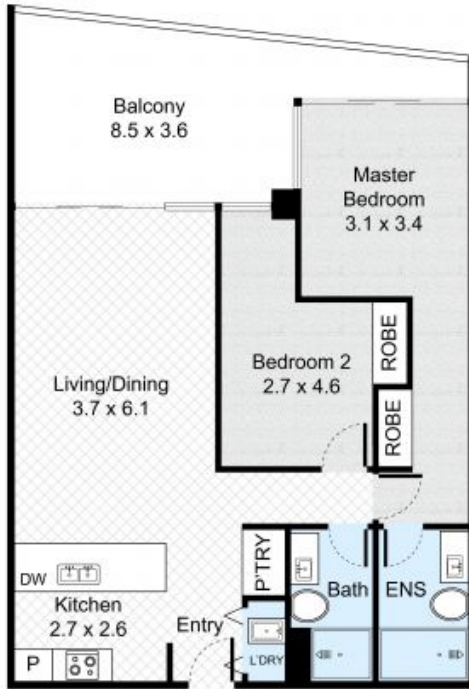


Cassandra Magro

0427 589 692

Unit 2505, 10-12 Sickle Avenue Hope Island

2 Bed 2 Bath 1 Car



FLOOR PLAN



Car Space
(Not In Position)

Internal : 78m²
External : 19m²



CAR SPACE



All information contained herein is gathered by Little Hinges. Whilst the scanning technology is highly reliable, we cannot guarantee its accuracy and interested parties should rely on their own enquiries.