

1/18 Gladstone Street Bexley, NSW 4 3 3

Huge street facing tri-level town-home with basement

This immense street-facing residence provides luxurious living over three stylish levels, with elevated views to the CBD.

Price: RECORD PRICE | \$1,453,000



Sam Abbas

0406 750 075



EJ Joseph

0432 969 029

1/18 Gladstone Street
Bexley



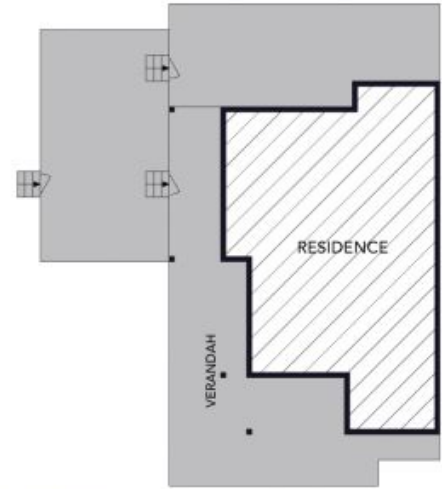
First Floor



Second Floor



Ground Floor



Site Plan



The site plan and floor plan are not to scale; measurements are indicative and in metres. Bushes and trees are placed for illustration purposes. Plans should not be relied on. Interested parties should make and rely on their own enquiries. All other information provided has been collected from reliable sources but cannot be guaranteed for accuracy.

1/18 Gladstone Street
Bexley



First Floor



Second Floor



Ground Floor



The floor plan is not to scale; measurements are indicative and in metres. All features included in this 3D plan are for inspiration purposes only. This is not an exact replica of the property or the position of exterior elements. Plans should not be relied on. Interested parties should make and rely on their own enquiries.