



8 Letitia Place Bonville, NSW

4 2 3

### Stunning & Spacious Family Living

Nestled in the heart of a peaceful, family-friendly estate, this fully renovated four-bedroom residence offers the perfect blend of modern living and everyday functionality. Just a short drive from the vibrant village of Sawtell and its pristine beaches, cafes & restaurants, this beautifully updated home presents a rare opportunity to enjoy coastal living without compromising on space or style.

**Price:** \$999,000 - \$1,049,000

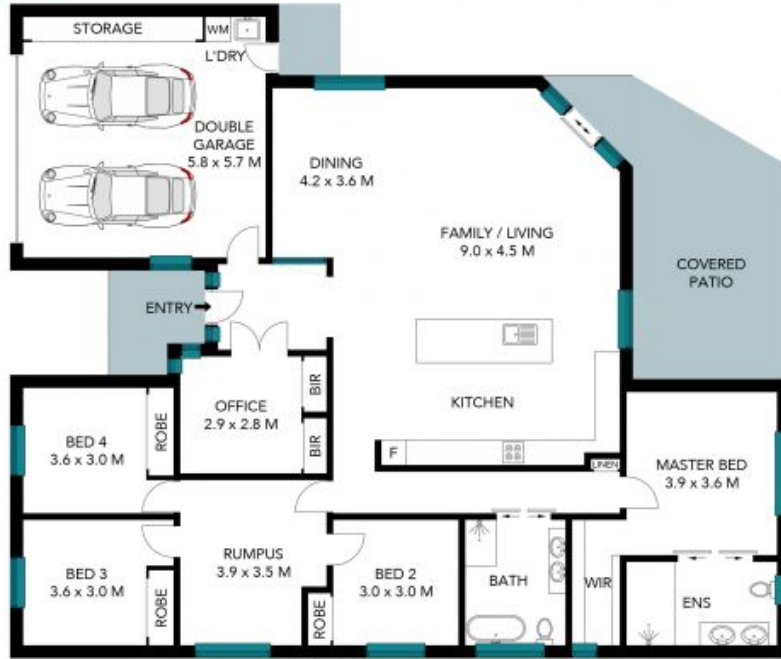
**Council Rates:** \$849.75 p/q



**Luke Wenban**

0418 165 979

8 Letitia Pl  
Bonville, NSW 2450



INTERNAL : 206.7 m<sup>2</sup>  
EXTERNAL : 33.0 m<sup>2</sup>

The site plan and floor plan are not to scale; measurements are indicative and in metres. Bushes and trees are placed for illustration purposes. Plans should not be relied on. Interested parties should make and rely on their own enquiries. All other information provided has been collected from reliable sources but cannot be guaranteed for accuracy.