



SHOP/3 MYAHGAH Mews Mosman, NSW

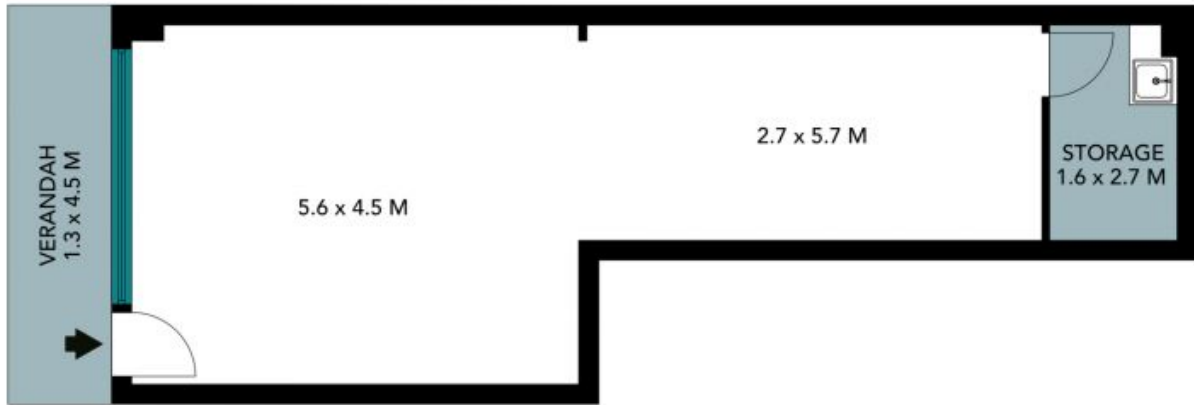
UNDER CONTRACT

Located in an open laneway away from traffic but perfectly located in the heart of Mosman. Offering a wide north facing shop frontage with an abundance of natural light.



Suzi Zadel

0411 321 771



The floor plan is not to scale, measurements are indicative and in metres. Exterior elements are not in position. Plans should not be relied on, interested parties should make and rely on their own enquiries. All other information provided has been collected from reliable sources but cannot be guaranteed for accuracy.