



18 Kenilworth Road Lindfield, NSW      5      3      2

### Renovated East Side Elegance Boasting a North-to-Rear Aspect

Positioned in one of the most sought after pockets, this beautifully finished residence masterfully blends timeless design with effortless everyday living. From the moment you enter, you're welcomed by generous proportions, sophisticated interiors, and a seamless indoor outdoor flow that caters perfectly to both relaxed family life and entertaining at scale. With a prized north to rear aspect, the home is bathed in natural light throughout the day,



**Steven Kourdis**

0402 555 675



**Adette Cao**

0433 412 196

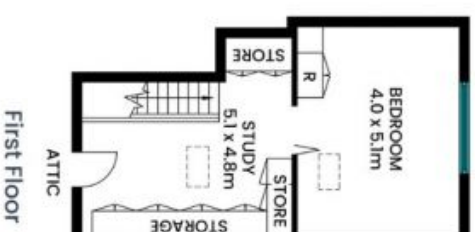
18 Kenilworth Road  
Lindfield



Site Plan



Ground Floor



First Floor



Internal area: 288m<sup>2</sup>

The site plan and floor plan are not to scale; measurements are indicative and in metres. Bushes and trees are placed for illustration purposes. Plans should not be relied on. Interested parties should make and rely on their own enquiries. All other information provided has been collected from reliable sources but cannot be guaranteed for accuracy.