



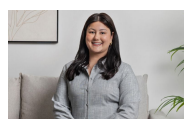
8/48 Abena Avenue Crace, ACT

1 1 2

Low-Maintenance Comfort with Everything You Need

Tucked away in the vibrant heart of Crace, this charming ground-floor apartment is perfect for those seeking a comfortable, low-maintenance lifestyle. North-facing and bathed in natural light, the open-plan living and dining area offers a warm and inviting space to relax or entertain, with a split system ensuring year-round comfort. The efficient kitchen provides ample storage, while the combined bathroom and laundry deliver everyday practicality.

Price: \$470 per week
Bond: \$1,880
Available Date: 04/07/2025



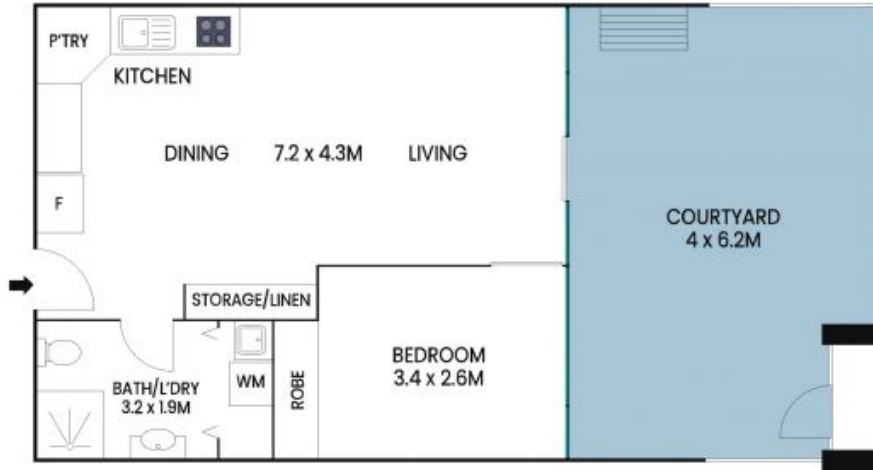
Courtney Saddi

6253 8220



Kerry Robinson

6253 8220



The site plan and floor plan are not to scale; measurements are indicative and in metres. Bushes and trees are placed for illustration purposes. Plans should not be relied on. Interested parties should make and rely on their own enquiries. All other information provided has been collected from reliable sources but cannot be guaranteed for accuracy.

8/48 Abena Avenue
Crace



The floor plan is not to scale; measurements are indicative and in metres. All features included in this 3D plan are for inspiration purposes only. This is not an exact replica of the property or the position of exterior elements. Plans should not be relied on. Interested parties should make and rely on their own enquiries.