



19/20 Pacific Highway Blacksmiths, NSW



### Easy-breezy coastal living made simple

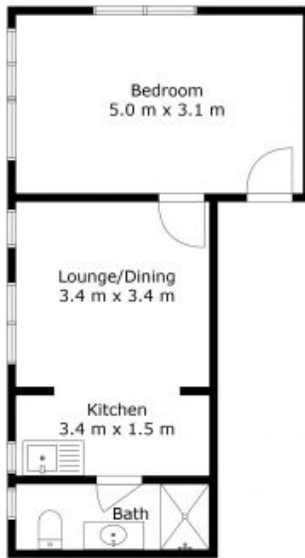
Soaked in sunlight and sea breezes, this first-floor bed-sitter in laidback Blacksmiths is the perfect step into the market or a fuss-free lock-and-leave weekender. Just 500m to the lake's edge for kayaking, fishing or picnics, and under 1km to nine miles of golden beach. Cafes, coastal walks, and surf breaks are all close by. This is easy-breezy coastal living made simple.

- Price:** \$279,000
- Council Rates:** \$208.40 p/q
- Water Rates:** \$760.00/year (approx)
- Strata Rates:** \$234.65 p/q

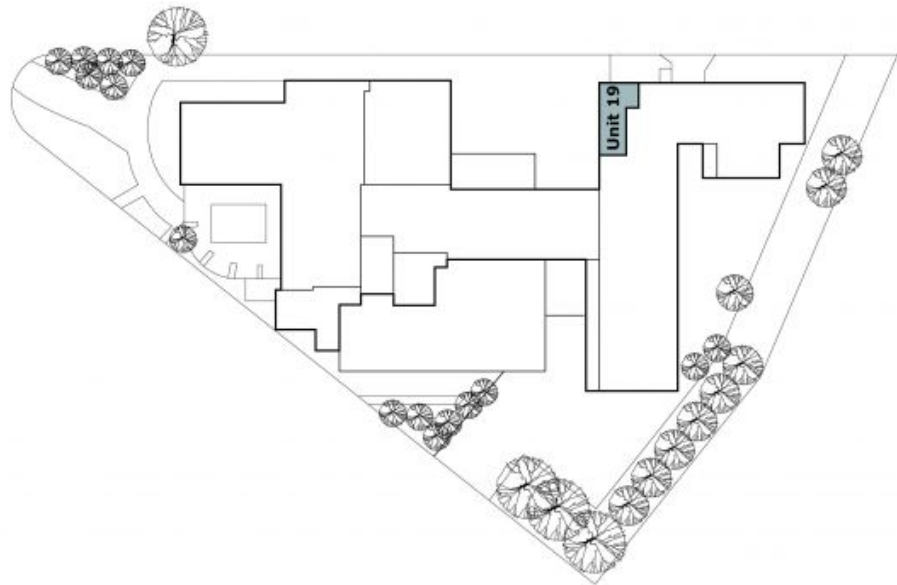


**Tony Rich**

0410 427 474



**Ground Floor**



**Site Plan**



The site plan and floor plan are not to scale; measurements are indicative and in metres. Bushes and trees are placed for illustration purposes. Plans should not be relied on. Interested parties should make and rely on their own enquires. All other information provided has been collected from reliable sources but cannot be guaranteed for accuracy.