



45 Cheltenham Road Cheltenham, NSW

3 

1 

1 

Charming Cheltenham Residence: Sunlit Spaces & Premier School Access

Discover your family's next chapter in one of Cheltenham's most sought-after locales. Perfectly positioned within prestigious school catchments, this residence promises both academic excellence and a warm embrace as you walk through its doors.

Price: \$840 per week

Bond: \$3,360

Available Date: 23/07/2025

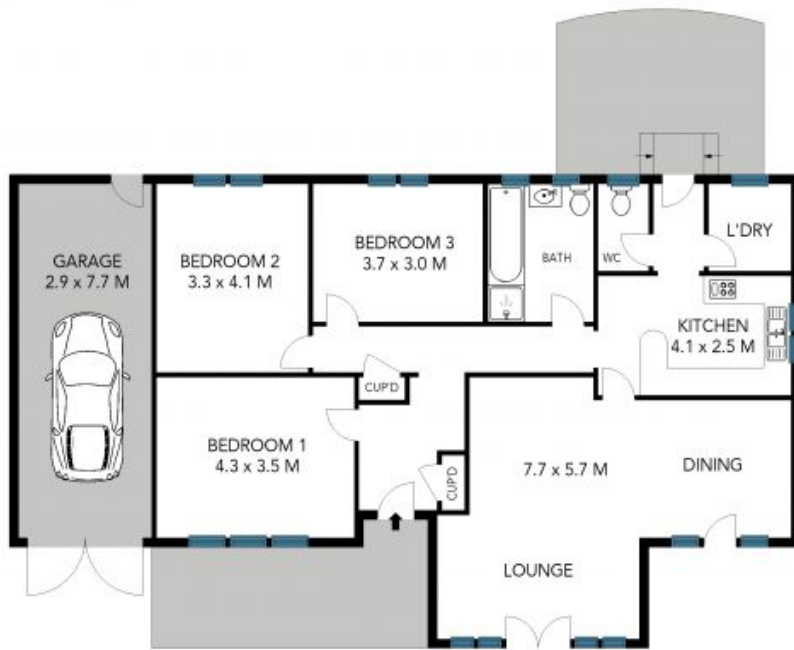
Stone Beecroft | Castle

02 8866 1500

Hill | Epping

45 Cheltenham Road
Cheltenham

STONE



Land Size: 1256sqm
Internal Size: 138sqm

SITE PLAN

The site plan and floor plan are not to scale; measurements are indicative and in metres. Bushes and trees are placed for illustration purposes. Plans should not be relied on. Interested parties should make and rely on their own enquiries. All other information provided has been collected from reliable sources but cannot be guaranteed for accuracy.