

10/102 Mitchell Avenue Kurri Kurri, NSW

2

1

1

Immaculate two-bedroom boutique villa

Nestled in an intimate and boutique complex backing onto Nellie Simm Park and Reserve awaits an immaculate two-bedroom brick villa perfect for first home buyers, downsizers and savvy investors. Freshly painted throughout and fitted with light easy-care tiles this home is move-in-ready or you're welcome to add some personal touches.

Price: \$420,000



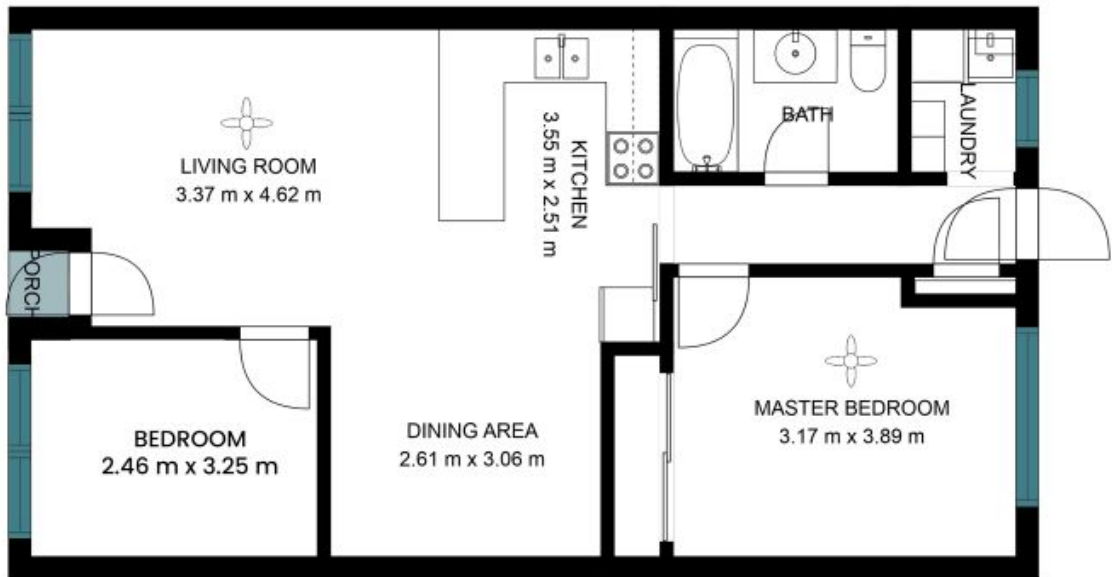
Renee Bean-Wyper

0403 325 076



Jorja Pauling

0435 930 665



The site plan and floor plan are not to scale; measurements are indicative and in metres. Bushes and trees are placed for illustration purposes. Plans should not be relied on, interested parties should make and rely on their own enquiries. All other information provided has been collected from reliable sources but cannot be guaranteed for accuracy.

