



20 Elliot Place St Helens Park, NSW

4 1 2

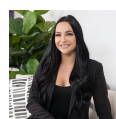
Freshly Updated Family Home is a Quiet Suburb

Situated in the leafy suburb of St Helens Park, this beautifully renovated four-bedroom property is looking for new tenants to call it home. Located close to schools, nearby parks and sporting fields, this home is ideal for an active lifestyle and is well-connected to public transport, Campbelltown CBD and the M5 motorway.

Price: \$630 per week

Bond: \$2,520

Available Date: 14/08/2025



Leasing Department

0481064443

Stone Macarthur