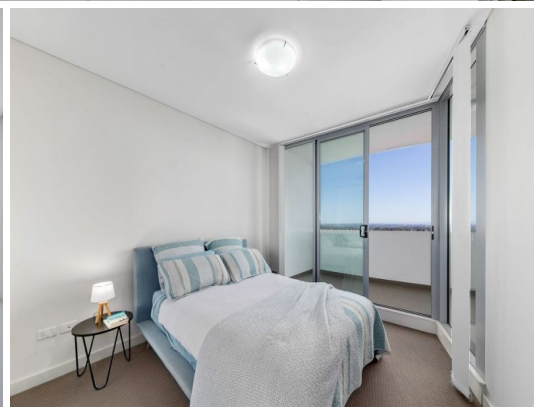
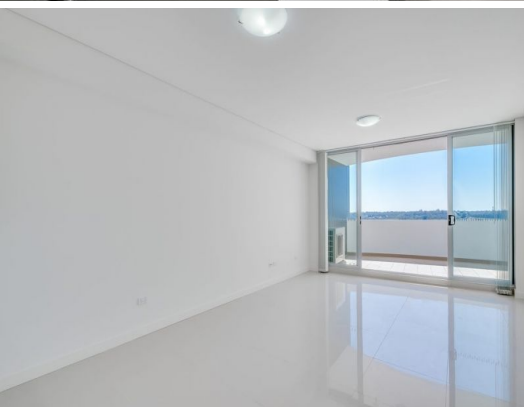


STONE



1405/299 Old Northern Road Castle Hill, NSW



Level fourteen, North East facing with panoramic district views

- Sleek stone kitchen with ample storage, island bench and stunning views
- Internally including two balconies
- Gas cooking and dishwasher
- Spacious combined living with plentiful light, opens to entertaining balcony
- Two balconies boasting panoramic district views, fresh air & outdoor living
- Master complete with built in robe, balcony access and designer ensuite
- Modern main bathroom, tiled floor to ceiling, shower and separate bath
- Internal laundry with dryer; security building with intercom and ducted air condition

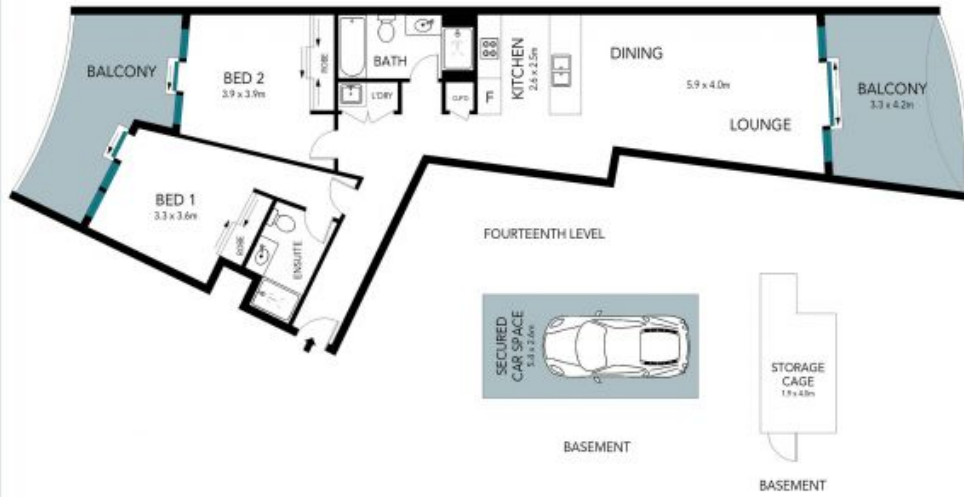
Price: \$760 per week

Available Date: 24/06/2025

Stone Beecroft | Castle

02 8866 1500

Hill | Epping



The floor plan is not to scale; measurements are indicative and in metres. Exterior elements are not in position. Plans should not be relied on. Interested parties should make and rely on their own enquiries.

1405/299 Old Northern Road, Castle Hill

STONE