



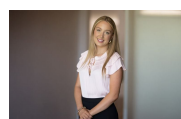
6/113 Shadforth Street Mosman, NSW



### Elegant urban living: exceptional first-home opportunity in Mosman

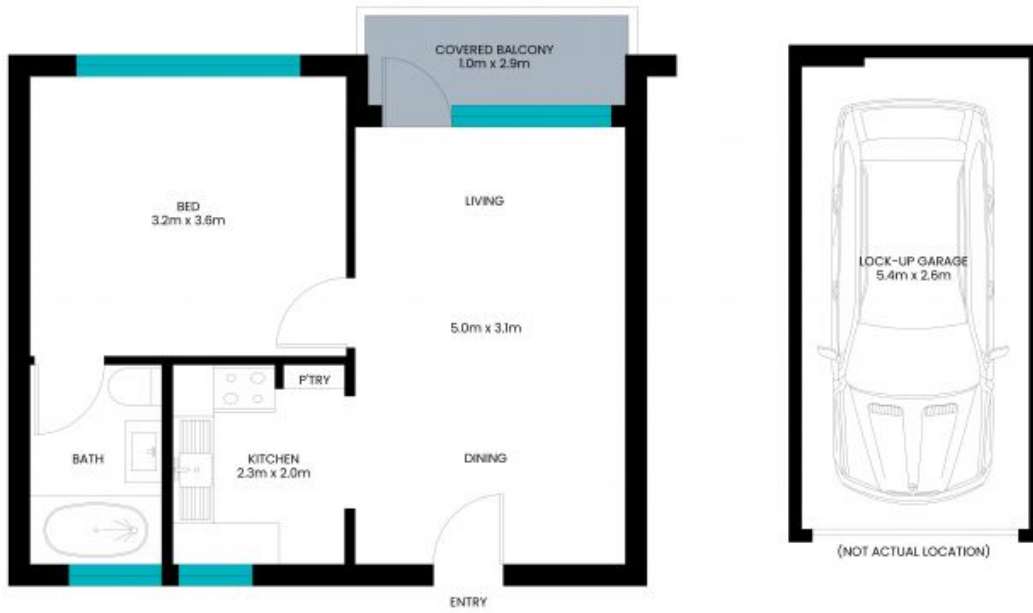
Nestled in a quiet pocket of Mosman, this spacious double-brick apartment is ideal for first homeowners wanting to embrace a metropolitan lifestyle. Stylish open-plan living offers wall-to-wall windows, a well-appointed balcony and stunning natural light, while walk-to-everything convenience makes life a breeze. Walk to buses, local schools, shopping, cafes, restaurants and parklands.

**Price:** Sold - Under Hammer  
**Council Rates:** \$377.58 p/q  
**Water Rates:** \$169.03 p/q  
**Strata Rates:** \$1,031.26 p/q



**Claudia Conroy**

0449 945 358



The site plan and floor plan are not to scale; measurements are indicative and in meters. Bushes and trees are placed for illustration purposes. Plans should not be relied on. Interested parties should make and rely on their own enquiries. All other information provided has been collected from reliable sources but cannot be guaranteed for accuracy.