

62 Subzero Crescent Menangle Park, NSW



### Brand new four-bedroom home in Menangle Park

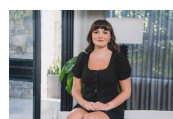
Positioned in the heart of Menangle Park's exciting new estate, this brand new four-bedroom home delivers modern comfort, smart design, and quality finishes throughout. Built by Transpire Constructions, it's the perfect opportunity for families, first-home buyers or investors seeking a stylish, move-in-ready home in a growing community.

**Price:** \$1,075,000



**Gary Luke**

0418 451 105



**Kaitlin Hall**

0404 529 516

**STONE**



## 62 Subzero Cr, Menangle Park NSW 2563



The floor plan is not to scale, measurements are in metres. Exterior elements are not in position.  
Plans should not be relied on. Interested parties should make and rely on their own enquiries.  
All other information provided has been collected from reliable sources but cannot be guaranteed for accuracy.