



5/36 Hampden Road Artarmon, NSW 2 1 1

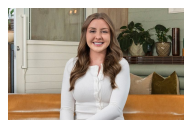
Big & Beautiful!

Enjoying a leafy outlook from every room this apartment is in an Art Deco security building of only six, this apartment offers light-filled interiors in an ultra-convenient position. Cleland & Thomson Parks and the esteemed Artarmon Public School are close by.

Price: \$730 per week
Bond: \$2,920
Available Date: 18/07/2025



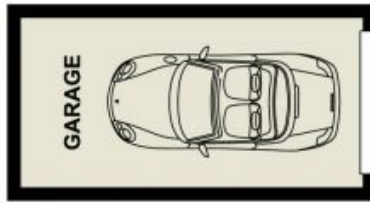
William Pendrick
 0434 808 385



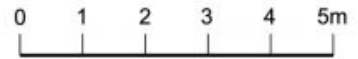
Jaydn Frintzilas
 0468 998 294



FIRST FLOOR



GROUND FLOOR



5/36 Hampden Road, Artarmon

Measurements are approximate. Not to scale. Illustrative purposes only.
We do not take any responsibility for any information supplied.

