



234/25 Wentworth Street Manly, NSW



Blissful resort-like beach and village lifestyle

Considerably larger than your average one-bedroom apartment, this exclusive contemporary apartment is set within the resort-like 'Peninsula' security building with village shopping, simmering a hotpot of cosmopolitan eateries and world-famous Manly Beach literally metres from the doorstep. Complete with a separate home office, large northeast balcony plus a heated pool, sauna and gymnasium on-site, it offers the ultimate lifestyle pad for executives, downsizers and weekenders or a premium investment opportunity.

Price:

Price Guide: \$1,750,000



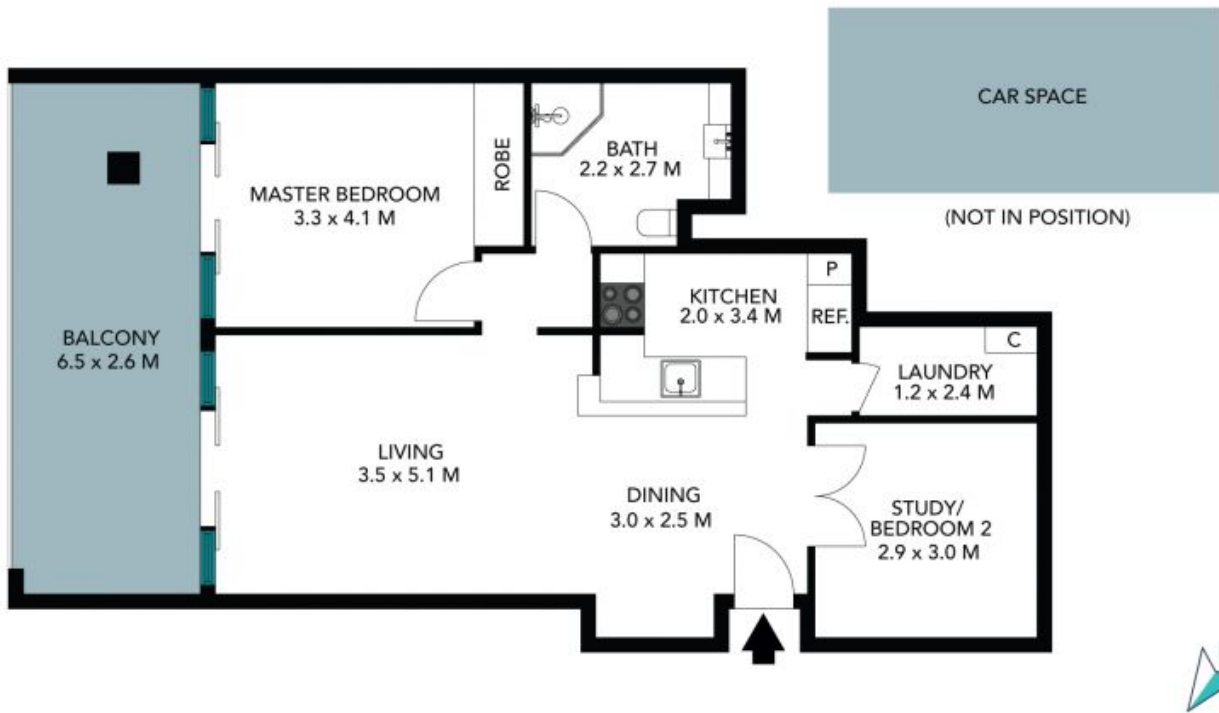
Sam Bursill

0449 969 452



Candice Cattell

0417 311 777



The floor plan is not to scale, measurements are indicative and in metres. Certain elements are not in position. Plans should not be relied on. Interested parties should make and rely on their own enquiries. All other information provided has been collected from reliable sources but cannot be guaranteed for accuracy.

234/25 Wentworth Street
Manly

STONE



The floor plan is not to scale; measurements are indicative and in metres. All features included in this 3D plan are for inspiration purposes only. This is not an exact replica of the property or the position of exterior elements. Plans should not be relied on. Interested parties should make and rely on their own enquiries.