



STONE

Apply Now! Scan this QR code with your phone or enter the following into your browser:
<https://t-app.com.au/stonecoffsharbour>



2 Makinson Close Toormina, NSW



Comfort and Convenience in a Quiet Cul-De-Sac

Perfectly positioned in a quiet, family-friendly cul-de-sac, this thoughtfully designed home offers comfort, space, and low-maintenance living - ideal for those seeking a practical lifestyle in a super-convenient location.

Price: \$650.00 pw

Available Date: 01/07/2025



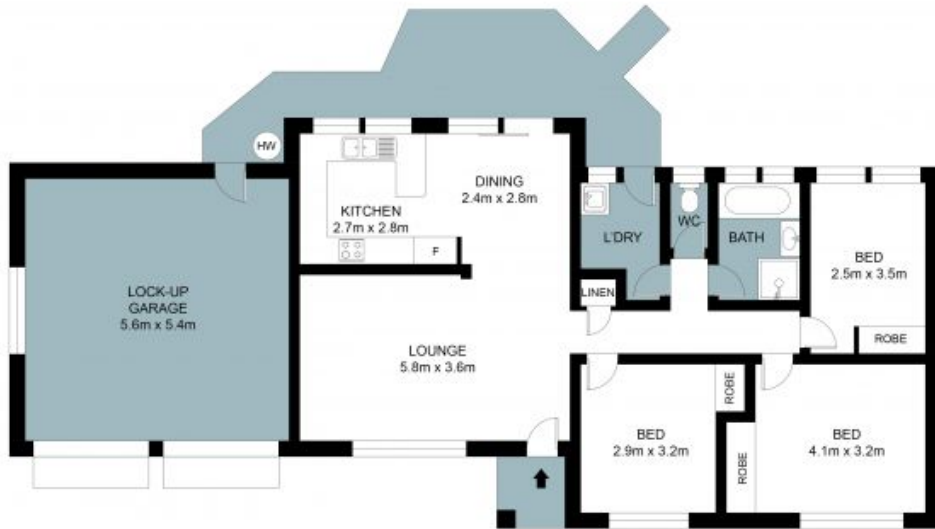
Felicity Moore

0467 970 317



Scarlett Mackay

0428 277 341



Floor Plan

The Floor plan is not to scale; measurements are indicative and in metres. Plans should not be relied on. Interested parties should make and rely on their own enquiries. All other information provided has been collected from reliable sources but cannot be guaranteed for accuracy.