



35 Elouera Crescent Woodbine, NSW

3

1

4

### Quiet, peaceful & spacious

A delightful family home offering comfortable living and ample space for all your needs. This charming residence features three well-proportioned bedrooms, ensuring privacy and comfort for every family member. The main bathroom is neatly presented with a Scandinavian-style bathroom and a separate toilet.

**Price:** \$1,000,000



**Andrew Diadyk**

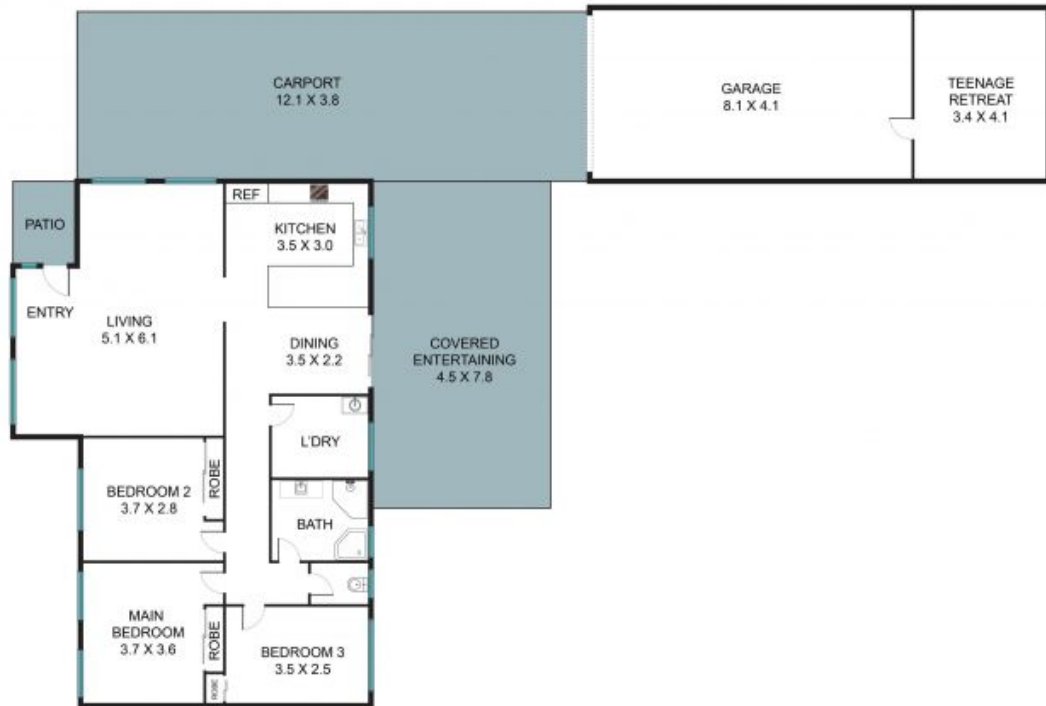
0422 164 657



**Andrew Diadyk**

0422 164 657

**STONE**



## 35 Elouera Cres, Woodbine NSW 2560



The floor plan is not to scale, measurements are in metres. Exterior elements are not in position.  
Plans should not be relied on. Interested parties should make and rely on their own enquiries.  
All other information provided has been collected from reliable sources but cannot be guaranteed for accuracy.