



14 Tallawalla Road Valentine, NSW

4 

1 

1 

North facing, light-filled home with lake views, loads of potential

Elevated on prized Tallawalla Road, this cherished four-bedroom home is bathed in northerly sunshine and captures sought-after views over Lake Macquarie. Set on a generous 916 sqm block with a large in-ground pool, it offers exciting potential and has been immaculately kept - move in and enjoy, renovate to add value, or build your dream home in this premier family-friendly location.

Price:

Contact Agent



Matthew Clarkson

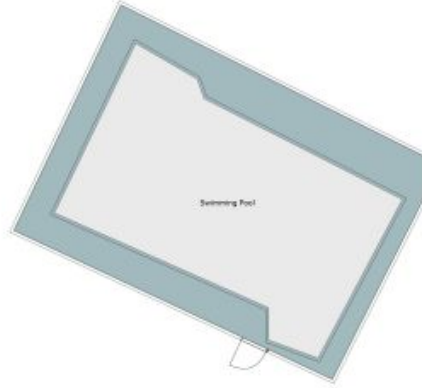
0456 791 524



Donney Ristevski

0415 597 002

14 Tallawalla Road
Valentine



The site plan and floor plan are not to scale; measurements are indicative and in metres. Bushes and trees are placed for illustration purposes. Plans should not be relied on, interested parties should make and rely on their own enquiries. All other information provided has been collected from reliable sources but cannot be guaranteed for accuracy.