



32 Wellesley Street Amaroo, ACT

3 

2 

1 

?THE DOOR IS OPEN, WELCOME HOME?

Price:

Sold at auction-\$855,000



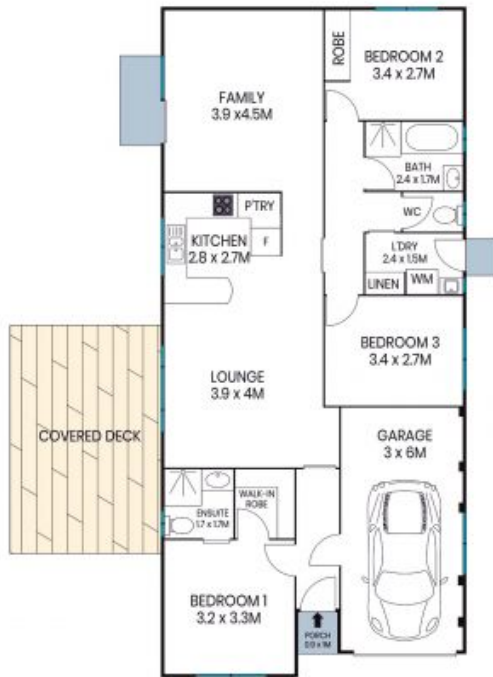
**Kris Hellier**

0413 799 700



**Jess Doolan**

0477 775 773



Site Plan



The site plan and floor plan are not to scale; measurements are indicative and in metres. Bushes and trees are placed for illustration purposes. Plans should not be relied on. Interested parties should make and rely on their own enquiries. All other information provided has been collected from reliable sources but cannot be guaranteed for accuracy.

32 Wellesley Street  
Amaroo



The floor plan is not to scale; measurements are indicative and in metres. All features included in this 3D plan are for inspiration purposes only. This is not an exact replica of the property or the position of exterior elements. Plans should not be relied on. Interested parties should make and rely on their own enquiries.