

18/29 Victoria Parade Manly, NSW



Coastal Courtyard Retreat Just Moments from the Beach

Perfectly positioned just footsteps from both the surf and harbour, this stylish executive apartment offers an enviable lifestyle in one of Manly's most exclusive and tightly held enclaves. Combining modern comfort with a premium beachside address, this is a rare opportunity to secure your own slice of Manly's vibrant coastal scene.

Price:

\$1,405,000



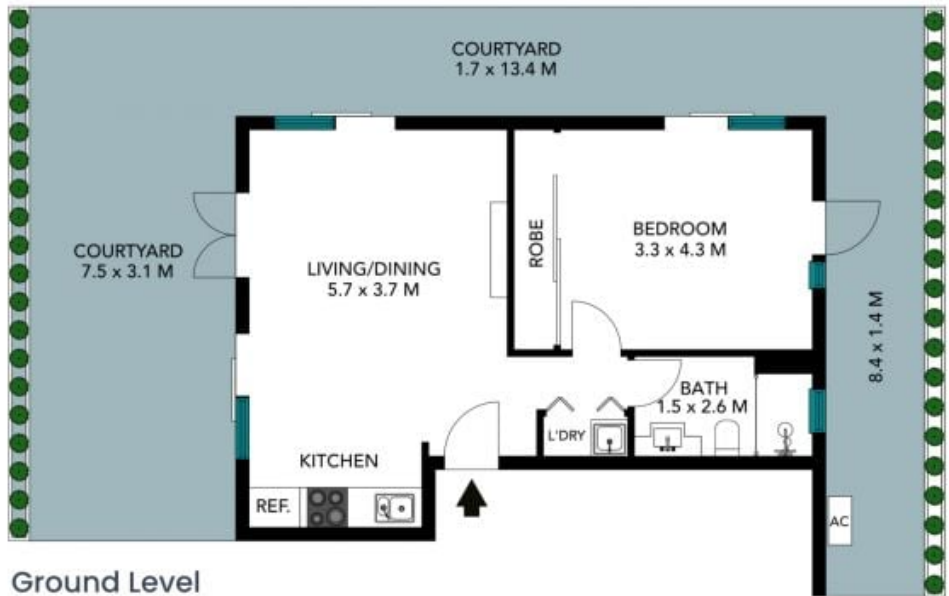
Adam Moore

0428 319 096



Mark Skeens

0401 241 381



Ground Level



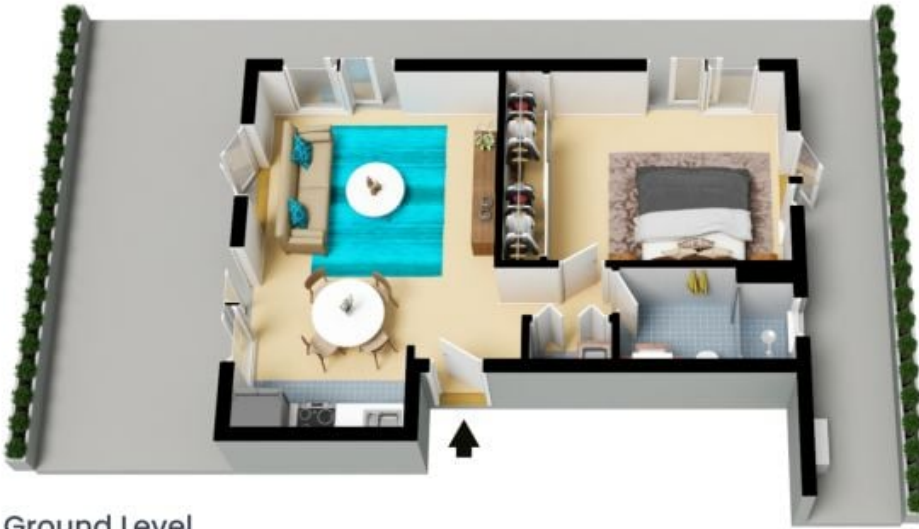
Basement Level



The floor plan is not to scale, measurements are indicative and in metres. Exterior elements are not in position. Plans should not be relied on. Interested parties should make and rely on their own enquiries. All other information provided has been collected from reliable sources but cannot be guaranteed for accuracy.

18/29 Victoria Parade
Manly

STONE



Ground Level



Basement Level



The floor plan is not to scale; measurements are indicative and in metres. All features included in this 3D plan are for inspiration purposes only. This is not an exact replica of the property or the position of exterior elements. Plans should not be relied on. Interested parties should make and rely on their own enquiries.