



7/9 Plant Street Balgowlah, NSW



Village living with harbour and skyline views

Positioned for both convenience and lifestyle, this bright and spacious renovated top-floor apartment in the boutique 'Rippletide' building offers easy living in a quiet leafy pocket within a short walk of Seaforth and Balgowlah Heights villages, and just up the road from beautiful Clontarf beach. Contemporary interiors are drenched in natural light courtesy of generous windows on every side, with open plan living/dining offering a box seat to panoramic views sweeping across Middle Harbour and the Spit to the glittering Sydney skyline.

Price: Auction Guide \$1,200,000

Water Rates: \$171.00 p/q



Maria Cassarino

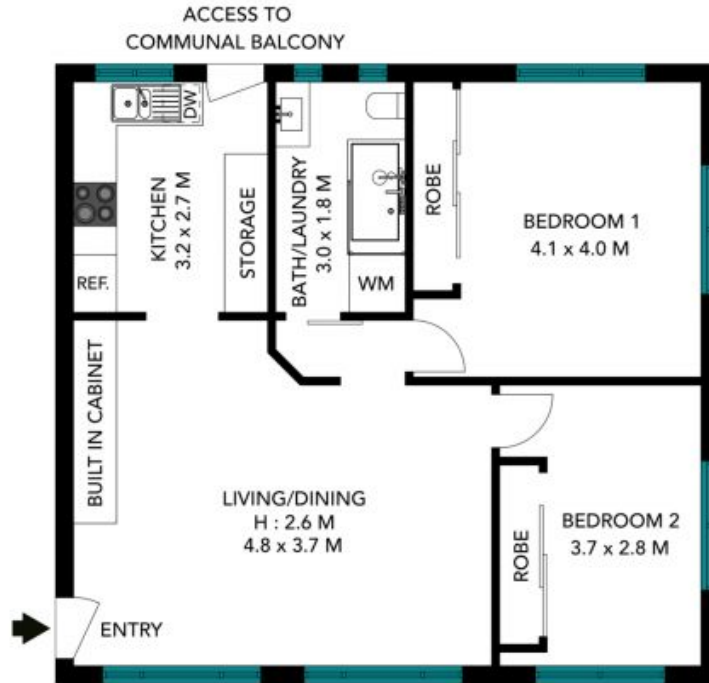
0411 818 093



Lauren Sudol

0438 138 675

7/9 Plant Street
Balgowlah



The floor plan is not to scale, measurements are indicative and in metres. Fixture elements are not in position. Plans should not be relied on. Interested parties should make and rely on their own enquiries. All other information provided has been collected from reliable sources but cannot be guaranteed for accuracy.

7/9 Plant Street
Balgowlah

STONE



The floor plan is not to scale; measurements are indicative and in metres. All features included in this 3D plan are for inspiration purposes only. This is not an exact replica of the property or the position of exterior elements. Plans should not be relied on. Interested parties should make and rely on their own enquiries.