



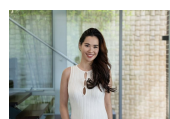
506/146 Bowden Street Meadowbank, NSW

3 2 2

Absolute Waterfront Penthouse ? Luxury Living with Panoramic Views

Welcome to a truly exceptional residence that redefines luxury waterfront living. This sophisticated, oversized penthouse is perched in the prestigious Waters Edge development, offering uninterrupted, front-row views of the sparkling Parramatta River ? a rare opportunity to live right on the water's edge.

Price: Deposit Taken
Bond: \$4,100
Available Date: 02/08/2025



Jennifer Howard

0412 630 727



Irma Rinaudo

0426 240 502