

228 Jamberoo Road Jamberoo, NSW



SOLD BY STONE REAL ESTATE | GREG CRUMPTON & HELENA CRUMPTON

Price: \$1,565,000

Lovely home nestled in rural setting



Greg Crumpton

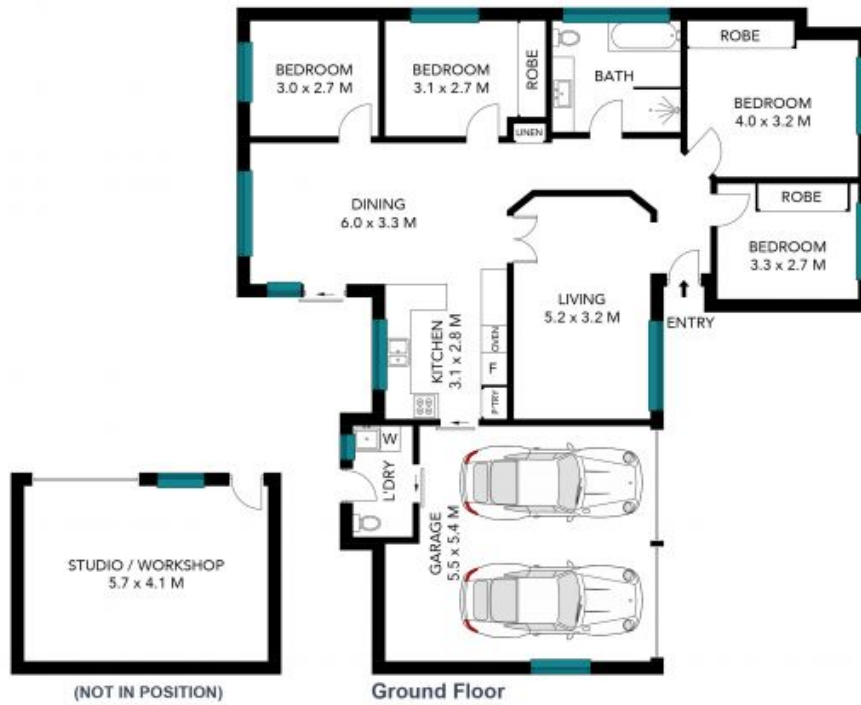
0418 557 185



Helena Crumpton

0415 119 019

228 Jamberoo Road
Jamberoo



The site plan and floor plan are not to scale; measurements are indicative and in metres. Bushes and trees are placed for illustration purposes. Plans should not be relied on. Interested parties should make and rely on their own enquiries. All other information provided has been collected from reliable sources but cannot be guaranteed for accuracy.