



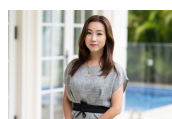
606/29 Lindfield Avenue Lindfield, NSW

2 2 1

### Panoramic Views and Designer Living in Village Centre

Delivering panoramic views under endless skies, this apartment offers the pinnacle of contemporary appeal, with the living area and both bedrooms enjoying the vista from their own balconies. This is Lindfield village at its best, positioned to take advantage of shopping, leisure, and transport, right at your front door.

**Price:** Sold Prior to Auction  
**Council Rates:** \$369.00 p/q  
**Water Rates:** \$171.00 p/q  
**Strata Rates:** \$1,282.38 p/q



**Chloe Huang**

0401 268 722



**Ryan Woo**

0410 884 680



Total area on title: 112m<sup>2</sup>

The site plan and floor plan are not to scale; measurements are indicative and in metres. Bushes and trees are placed for illustration purposes. Plans should not be relied on. Interested parties should make and rely on their own enquiries. All other information provided has been collected from reliable sources but cannot be guaranteed for accuracy.