



11/26-32 Gerard Street Cremorne, NSW

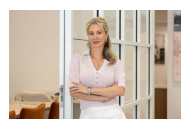


North facing Sanctuary with Panoramic Views

Bathed in northern sunshine and positioned at the rear of a recently refurbished development, this extremely peaceful residence offers a rare combination of panoramic views across Middle Harbour and beyond.

Price:

Contact Marize Bellomo



Marize Bellomo

0414 972 203



Alanna Tohme

0450 862 088

11/26 Gerard Street
Cremorne



The site plan and floor plan are not to scale; measurements are indicative and in metres. Bushes and trees are placed for illustration purposes. Plans should not be relied on. Interested parties should make and rely on their own enquiries. All other information provided has been collected from reliable sources but cannot be guaranteed for accuracy.