



2/1A Montrose Road Abbotsford, NSW



Stylish Townhouse with City Views in a Prime Boutique Setting

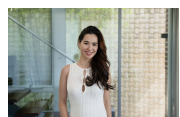
Welcome to The Montrose ? a boutique complex of just five, tucked away in one of the area's most peaceful and prestigious streets. Elevated to capture stunning city skyline views, this beautifully maintained home offers a low-maintenance lifestyle in an unbeatable location.

Price: Deposit Taken
Bond: \$3,600
Available Date: 10/07/2025



Irma Rinaudo

0426 240 502



Jennifer Howard

0412 630 727

2/1A Montrose Street
ABBOTSFORD

STONE



The site plan and floor plan are not to scale; measurements are indicative and in metres. Bushes and trees are placed for illustration purposes. Plans should not be relied on. Interested parties should make and rely on their own enquiries. All other information provided has been collected from reliable sources but cannot be guaranteed for accuracy.